

CLOVELLY

INDOOR STYLE MEETS OUTDOOR DURABILITY AS 'CLOVELLY' SEAMLESSLY BLURS THE LINES BETWEEN A FASHION THAT WAS ONCE IMPOSSIBLE IN OUTDOOR FURNITURE. A HIGH-STYLE, LOW-MAINTENANCE COLLECTION FOR THE ULTRA-CONTEMPORARY USER. CLOVELLY'S DINING SET FUSES MODERN INTERIOR STYLING WITH OUTDOOR LIVING. THE FLAT-BAR ALUMINIUM FRAME DEFINES CLOVELLY. LINES SYNC IN PERFECT FORM BETWEEN THE TABLE FRAME AND HPCL SURFACE.



MATERIALS

ALUMINIUM POWDER COAT
HPCL
BATYNE





NEW CLOVELLY DINING CHAIR NOT ONLY COMPLEMENTS THE CURRENT TABLE COLLECTION BUT STANDS APART WITH ITS UNIQUE COMFORT FUNCTION. CONSTRUCTED FROM SOLID ALUMINIUM FLAT BAR THE CLOVELLY DINING CHAIR WITH A LARGER RAKE TO THE BACK, AND FULL BATYLINE MESH SLING MAKES THIS OUR MOST COMFORTABLE DINING CHAIR, PERFECT FOR THOSE LONG LUNCHES AND BALMY NIGHTS.

CLOVELLY DINING CHAIRS, TAUPE POWDER-COATED ALUMINIUM FRAME WITH WHITE HPCL SLATS. CLOVELLY CARVER CHAIRS TAUPE FRAMES WHITE BATYLINE®.







THE CLOVELLY COLLECTION HAS EXTENDED ITS PRODUCT RANGE IN 2012. THE STAND-ALONE DINING TABLE NOW INCORPORATES A NEW MATCHING DINING CHAIR AND CIRCULAR TABLE, COMPLETING A FULL DINING COLLECTION.

THE NEW CIRCULAR TABLE IS CONSTRUCTED FROM SOLID LASER CUT ALUMINIUM LEGS AND A HPCL TOP, WHICH HAS AN ADDED PARASOL HOLE FOR CONVENIENCE. THERE ARE 3 TABLE SIZES IN THE COLLECTION WHICH INCLUDE, 1000MM, 1200MM AND 1500MM RADIUS. THERE ARE ALSO 2 FRAME COLOUR OPTIONS (WHITE & TAUPE) AND 2 HPCL TOP COLOUR OPTIONS (WHITE & CHARCOAL.)

CLOVELLY DINING TABLE (2600 X1000), WHITE POWDER-COATED ALUMINIUM FRAME WITH WHITE HPCL SLATS. PIANO CARVER CHAIRS WHITE BATYLINE®.

CLOVELLY'S DINING TABLE BROADENS HARBOUR OUTDOOR'S SUCCESSFUL USE OF HIGH-PRESSURE COMPACT LAMINATE SURFACES BY INCORPORATING A DROP SHADOW EFFECT SEEN BY RAISING THE SURFACE ABOVE THE FRAME, LEAVING THE IMPRESSION THAT THE SURFACE IS FLOATING. THE LINES OF THE 4-INCH-WIDE FLAT BAR LEGS FORM A SEAMLESS SYNERGY OF STYLE AND FUNCTION ACROSS THE SURFACE, AS THE LAMINATE HAS BEEN CUT TO ECHO THE SYMMETRICAL FORM OF THE LEGS.





FRAME

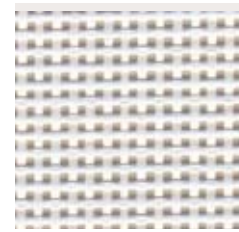


ALUMINIUM TAUPE

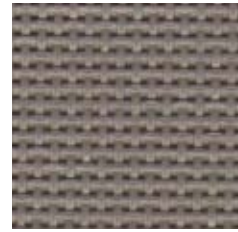


ALUMINIUM WHITE

MATERIALS



BATYLINE® WHITE



BATYLINE® TAUPE



HPCL WHITE



HPCL CHARCOAL

PRODUCT	CODE	WIDTH	DEPTH	HEIGHT	SEAT
	DINING CHAIR CLO_01	560 (23")	500 (40")	800 (32")	820 (30")
	DINING TABLE CLO_02	1200 (49")	1000 (40")	740 (30")	
	DINING TABLE CLO_03	1500 (61")	1000 (40")	740 (30")	
	DINING TABLE CLO_04	2000 (79")	1000 (40")	740 (30")	
	DINING TABLE CLO_06	2600 (103")	1000 (40")	740 (30")	