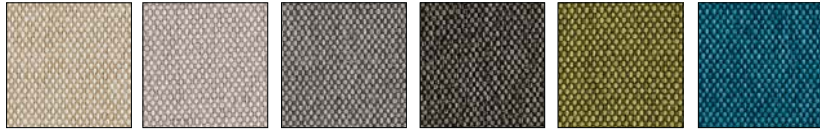
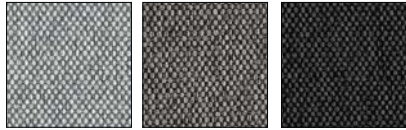


**Berna | CAT. 1**



1SA2 Greige 1SA3 Light 1SA4 Brown 1SA6 Brown 1SA7 Green 1SA8 Blue



1SB0 Blue 1SB1 Grey 1SB2 Grey



100% PL

**NEW Bergen | CAT. 2**



S2R Light S2S Greige S2N Brown S2P Grey S2M Blue S2U Pink

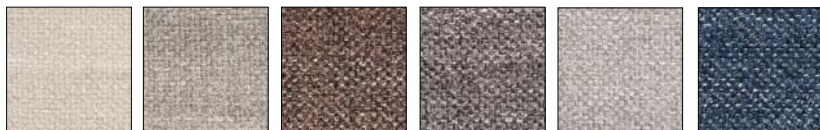


S2T Red S2Q Yellow S2V Yellow S2W Green

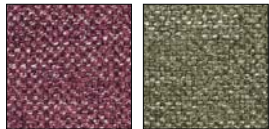


100% PL

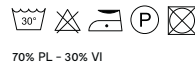
**NEW Foggy | CAT. 2**



S5V Light S5W Greige S5X Brown S5Z Grey S5Y Grey S6A Blue

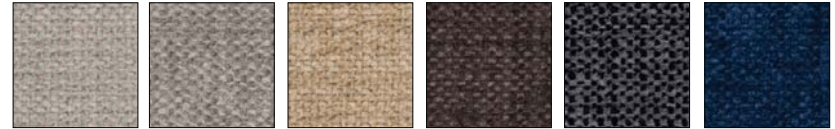


S6B Pink S6C Green

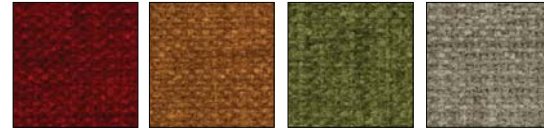


70% PL - 30% VI

**Kenton | CAT. 2**



SW0 Light SW1 Greige SW2 Greige SW3 Brown SW4 Grey SW5 Blue



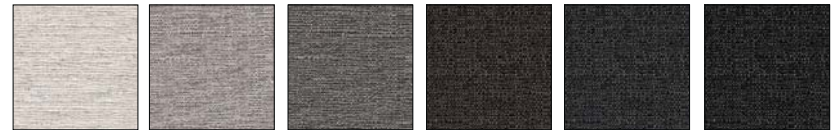
SW6 Red SW7 Yellow SW8 Green SW9 Green



100% PL

**Denver | CAT. 3**

Teflon® is a registered trademark of The Chemours Company FC LLC. used under license by Calligaris S.p.a.



A02 Light A03 Light A04 Brown A06 Brown A07 Grey A08 Grey

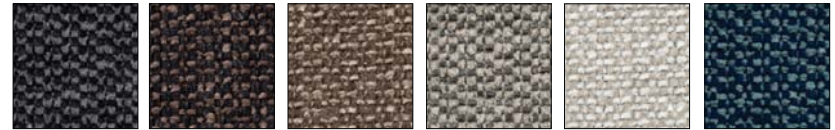


A09 Blue A0B Greige

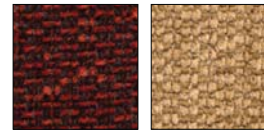


41% VI 21% PL 18% LI 15% CO 4% PC 1% AF

**Malmo | CAT. 3**



SQ1 Grey SQ2 Brown SQ3 Greige SQ4 Grey SQ5 Light SQ6 Blue



SQ7 Red SQ8 Yellow

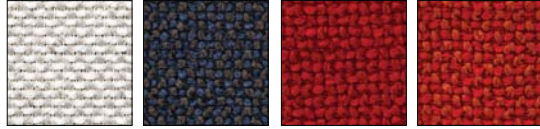


79% PL - 16%CO - 5%PC

### Melrose | CAT. 3



1SG7 Light    1SG8 Greige    1SG9 Greige    1SH0 Brown    1SH1 Grey    1SH2 Yellow



SH4 Light    SH6 Blue    SH7 Red    SH8 Red

40° 77% PL - 17%CO - 6%PC

### Cannes | CAT. 3LX

Teflon™ is a registered trademark of The Chemours Company FC LLC, used under license by Calligaris S.p.a.



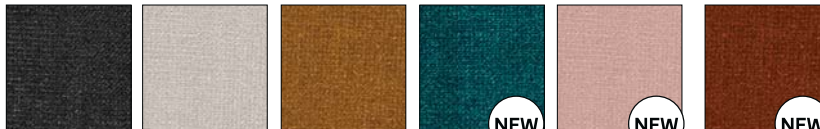
SL8 Greige    SM0 Yellow    SM1 Blue    SM2 Brown    SM3 Grey    SM5 Light

40° 52% PL    4% PC  
22% VI    1% AF  
21% CO

### Hortensia | CAT. 3LX



SS9 Greige    ST0 Brown    ST1 Pink    ST2 Red    ST3 Green    ST4 Blue



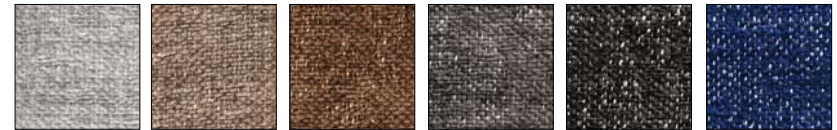
ST5 Grey    ST6 Light    ST7 Yellow    S5E Blue    S5F Pink    S5G Yellow



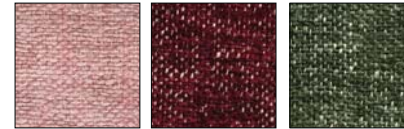
S5H Green

60° 92% PL - 5% CO - 3% LA

### NEW Kimber | CAT. 4LX



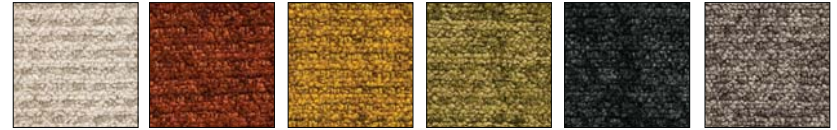
S6D Light    S6E Greige    S6F Brown    S6G Grey    S6H Grey    S6J Blue



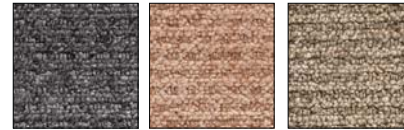
S6L Pink    S6K Red    S6M Green

30° 60% CO - 5% PL - 35% VI

### Noor | CAT. 4LX



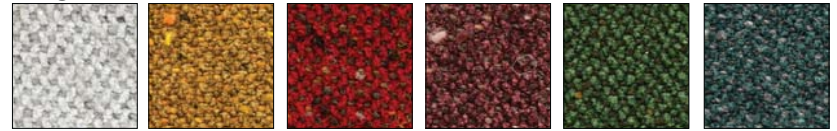
SX2 Light    SX3 Red    SX4 Yellow    SX5 Green    SX6 Blue    SX7 Brown



SX8 Grey    SX9 Pink    SY0 Greige

52% VI - 48%CO

### Regent | CAT. 4LX



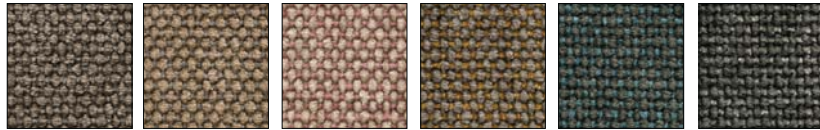
SS0 Light    SS1 Yellow    SS2 Red    SS3 Pink    SS4 Green    SS5 Blue



SS6 Brown    SS7 Greige    SS8 Grey

30° 40% VI    7% PA  
28% WV    4% PC  
17% CO    4% PL

**Beers | CAT. 5LX**



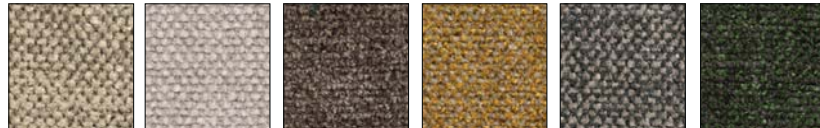
SU6 Brown SU7 Greige SU8 Pink SU9 Yellow SV0 Blue SV1 Grey



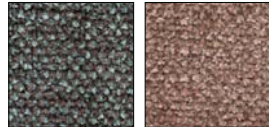
SV2 Red SV3 Light SV4 Green



**Cullinan | CAT. 5LX**



ST8 Greige ST9 Light SU0 Brown SU1 Yellow SU2 Grey SU3 Green



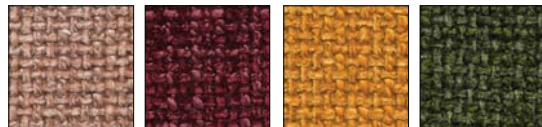
SU4 Blue SU5 Pink



**NEW Jubilee | CAT. 5LX**



S2B Light S2C Greige S2D Brown S2E Grey S2F Blue S2G Blue



S2J Pink S2H Red S2K Yellow S2L Green



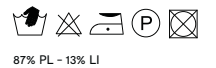
**NEW Mogol | CAT. 5LX**



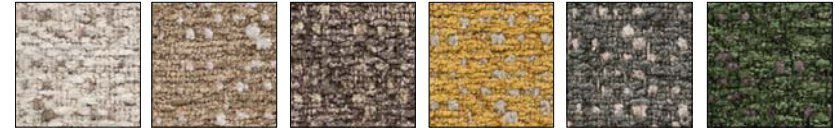
S5J Light S5K Greige S5L Brown S5M Grey S5N Blue S5P Blue



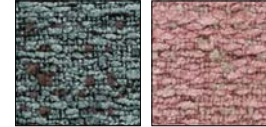
S5R Pink S5Q Red S5S Yellow S5T Green S5U Green



**Tiffany | CAT. 5LX**



SY1 Light SY2 Greige SY3 Brown SY4 Yellow SY5 Grey SY6 Green



SY7 Blue SY8 Pink



DECORATIVE FABRICS

LEATHERS

**NEW** Pixel | CAT. 3



60% CO - 40% PL

S6Q  
Decoration Grey

**NEW** Maka | CAT. 3LX

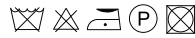


63% CO - 37% PL

S6P  
Decoration Green

S6N  
Decoration Blue

**Brent** | CAT. 5LX



43% CO - 31%VI - 26% LI

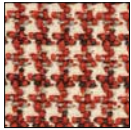
SR6  
Decoration Greige

SR7  
Decoration Grey

SR8  
Decoration Blue

SR9  
Decoration Pink

**Elm** | CAT. 5LX



56% CO  
44% VI

SR0  
Decoration Greige

SR1  
Decoration Pink

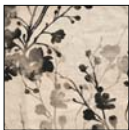
SR2  
Decoration Red

SR3  
Decoration Green

SR4  
Decoration Blue

SR5  
Decoration Grey

**NEW** Times | CAT. 5LX



51% JU  
49% LI

S6T  
Decoration Pink

S6S  
Decoration Grey

S6R  
Decoration Green

S6U  
Decoration Brown

**NOTE:**  
Fabrics PIXEL - MAKA - BRENT - ELM - TIMES are only available on decorative throw pillows and on roll pillow Mies CS/3404.  
Fabrics PIXEL - MAKA - ELM are only available on lounge chairs COCO - COLLEGE - LOVE and for MUFFIN ottoman.

**Esprit**



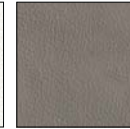
683  
Black



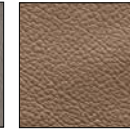
470  
Coffee



705  
Optic white



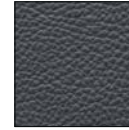
D04  
Taupe



L01  
Antilope brown



L08  
Cream



L16  
Grey

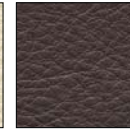
**Emotion**



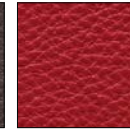
L5J  
Black ink



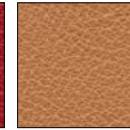
L1D  
Soul white



L3P  
Root



L2V  
Siam



L3B  
Dune



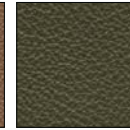
L1C  
Papyrus



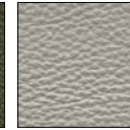
L1X  
Dash



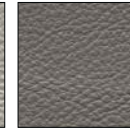
L3J  
Antilop



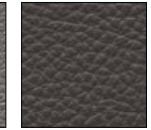
L3X  
Birch



L5C  
Turtledove



L5G  
Graystone



L5H  
Gray shadow

**EMOTION:** In cooperation with Mastroto Group, additional 93 finishes were selected and are available on request. Please contact the Sales Department for any further information.