

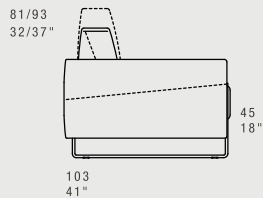
NEWPORT

STANDARD FEATURES

- Hard wood frame, seat suspensions in reinforced elastic webbing.
- Seat depth 53 cm - 21".
- Seat height 45 cm - 18".
- Armrest width 29 cm - 11".
- PNO Armrest width 21 cm - 8".
- Armrest height 61 cm - 24".
- Seat cushions in polyurethane covered with wadding.
- Back cushions in polyurethane covered with wadding.
- Metal legs height 12 cm - 11" available in all customizing finishes.
- Back cushions lift up with air spring mechanism (max height 93 cm - 37").
- Back cushions of corner elements in S/D01, S/DEX, S/DP038, S/DT038, S/DEJ, S/DP005 and S/DT005 cannot be lifted.
- Folding bed not available.
- Special stitching CUC 514.

CARATTERISTICHE STANDARD

- Struttura in legno e multistrato, molleggio seduta con cinghie elastiche.
- Profondità seduta 53 cm.
- Altezza seduta 45 cm.
- Larghezza braccio 29 cm.
- Larghezza braccio PNO 21 cm.
- Altezza braccio 61 cm.
- Cuscini seduta in poliuretano rivestito in falda.
- Cuscini schienale in poliuretano rivestiti in falda.
- Piedi in metallo altezza 12 cm, disponibili in tutte le finiture.
- Lo schienale si può alzare grazie a un meccanismo con molla a gas (altezza massima 93 cm).
- I cuscini schienali negli elementi angolari S/D01, S/DEX, S/DP038, S/DT038, S/DEJ, S/DP005 e S/DT005 hanno schienale fisso.
- Inserimento letto non possibile.
- Cucitura speciale CUC 514.



NOTES

- Dimensions: the first figure shows sizes in centimeters, the second in inches.
- Mixing above groups (X-J) will create sectionals with different seat widths.
- Corner pieces S/D01, EV4 and EVT04 can be used with all above groups X-J.
- Back lacquered glass top (black or white).
- Ceramic and marble top available in all customizing finishes.

* **Corner elements with mechanism available upon request, \$ 315 up-charge.**

NOTE

- Dimensioni: la prima cifra indica i centimetri, la seconda cifra indica i pollici.
- Utilizzando elementi di famiglie diverse (X-J) si avranno composizioni con sedute di larghezza diverse tra di loro.
- Gli elementi S/D01, EV4 ed EVT04 possono essere utilizzati indifferentemente con i gruppi X-J.
- Ripiano in vetro retrolaccato (nero o bianco).
- Ripiano in ceramica e marmo disponibili in tutte le finiture presenti in collezione.

* **Disponibile su richiesta elementi angolari con meccanismo, supplemento \$ 315.**

PNO
110 / 43"



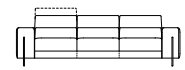
D2
194 / 76"



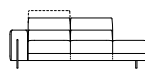
D3
230 / 91"



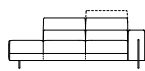
D3M
262 / 103"



SP042
220 / 87"



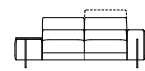
DP042
220 / 87"



ST042
208 / 82"



DT042
208 / 82"



**RIGHT OR LEFT
GLASS-CERAMIC/MARBLE TABLE**

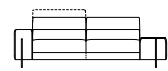
SP044
256 / 101"



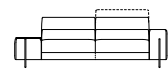
DP044
256 / 101"



ST044
244 / 96"



DT044
244 / 96"



**RIGHT OR LEFT
GLASS-CERAMIC/MARBLE TABLE**

X

all items in group X have the same seat width / tutti gli elementi del gruppo X hanno lo stesso modulo di seduta

E22
68 / 27"



S23
97 / 38"



D23
97 / 38"



S21
165 / 65"



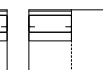
D21
165 / 65"



S25
123 / 48"



D25
123 / 48"



ST025
111 / 44"



DT025
111 / 44"



S29
97 / 38"



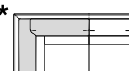
D29
97 / 38"



SEX
189 / 74"



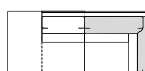
DEX
189 / 74"



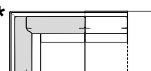
**RIGHT OR LEFT
GLASS-CERAMIC/MARBLE TABLE**

DEPTH 153 / 60"

SP038
244 / 96"



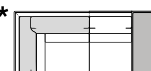
DP038
244 / 96"



ST038
232 / 91"



DT038
232 / 91"



**RIGHT OR LEFT
GLASS-CERAMIC/MARBLE TABLE**

J

all items in group J have the same seat width / tutti gli elementi del gruppo J hanno lo stesso modulo di seduta

E11
86 / 34"



S13
115 / 45"



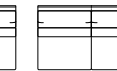
D13
115 / 45"



S03
201 / 79"



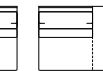
D03
201 / 79"



S17
141 / 56"



D17
141 / 56"



ST017
129 / 51"



DT017
129 / 51"



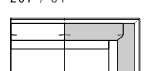
S31
115 / 45"



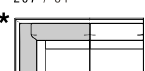
D31
115 / 45"



SEJ
207 / 81"



DEJ
207 / 81"



**RIGHT OR LEFT
GLASS-CERAMIC/MARBLE TABLE**

DEPTH 153 / 60"

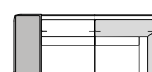
SP005
262 / 103"



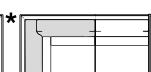
DP005
262 / 103"



ST005
250 / 98"



DT005
250 / 98"



**RIGHT OR LEFT
GLASS-CERAMIC/MARBLE TABLE**

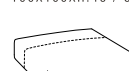
S01
121 / 48"



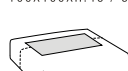
D01
121 / 48"



EV4
100X100XH.45 / 39X39XH.18"



EVT04
100X100XH.45 / 39X39XH.18"



C0100
SUGGESTED PILLOW
40X40 / 16X16"



**SIDE
GLASS-CERAMIC
MARBLE TABLE**
TOP DIMENSIONS:
90X45 / 35X18"

**STITCHING
CUC 501**