

# SABA FABRICS: 2026 (june)

C/E:

## CLEAN

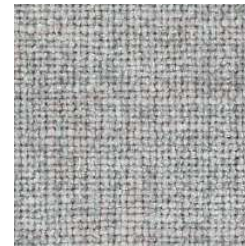
82% PL, 18% Rayon  
100,000 double rubs



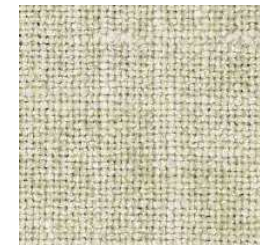
CLEAN 04



CLEAN 05



CLEAN 06



CLEAN 07



CLEAN 14



CLEAN 19



CLEAN 18

## MELANGE

54% Acrylic, 46% PL  
40,000 double rubs



MELANGE 01



MELANGE 02



MELANGE 03



MELANGE 04



MELANGE 09

## STUOIA

100% CO  
40,000 double rubs



STUOIA 01



STUOIA 02



STUOIA 03



STUOIA 04



STUOIA 09

## EXTRA/LUSSO

### CHARME

95% PL, 55% CO  
55,000 double rubs  
Water Repellent



CHARME 100



CHARME 111



CHARME 400



CHARME 401



CHARME 404



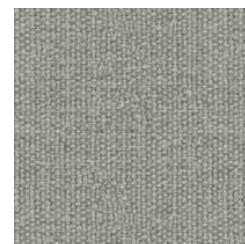
CHARME 406



CHARME 500



CHARME 501



CHARME 601



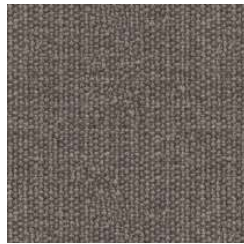
CHARME 603

# SABA FABRICS: 2026 (june)

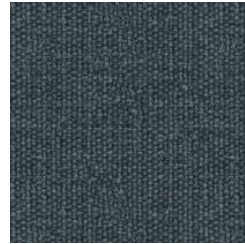
## EXTRA/LUSSO

### CHARME

95% PL, 55% CO  
55,000 double rubs  
Water Repellent  
...continued



CHARME 604



CHARME 605



CHARME 606



CHARME 800



CHARME 802



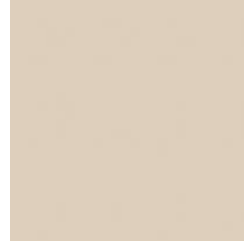
CHARME 900

### CLOUD faux leather

31% CO,  
68% PVC, 1% PU  
51,200 double rubs



CLOUD 2E3



CLOUD 4EZ



CLOUD 4G9



CLOUD 5AS



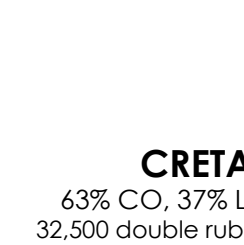
CLOUD 5EL



CLOUD 5EM



CLOUD 901



**CRETA**  
63% CO, 37% LI  
32,500 double rubs



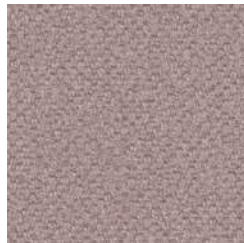
CRETA 12



CRETA 14



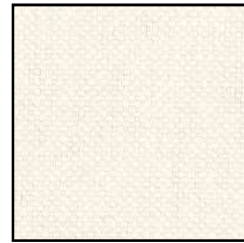
CRETA 15



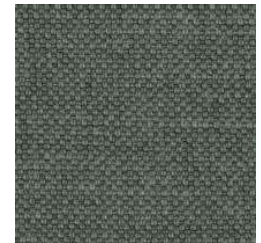
CRETA 16



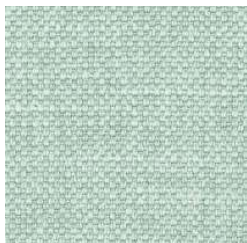
CRETA 1D



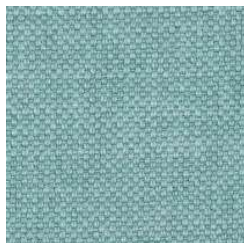
CRETA 2A



CRETA 2E



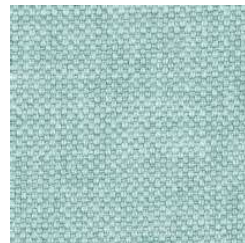
CRETA 3E



CRETA 4B



CRETA 4D



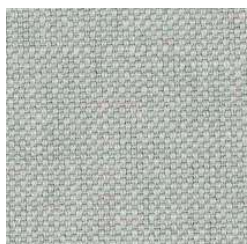
CRETA 5B



CRETA 69



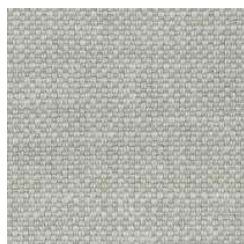
CRETA 70



CRETA 71



CRETA 72



CRETA 94

### DARWIN

58% VI,  
11% LI, 31% CO  
40,000 double rubs



DARWIN 07



DARWIN 140

# SABA FABRICS: 2026 (june)

## EXTRA/LUSSO

### DARWIN

58% VI,  
11% LI, 31% CO  
40,000 double rubs  
...continued



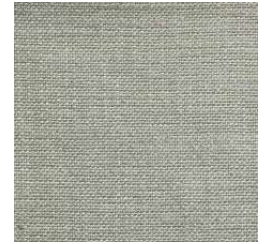
DARWIN 151



DARWIN 1633



DARWIN 18



DARWIN 25

### DICKINSON

70% VI, 30% LI  
25,000 double rubs



DICKINSON 14



DICKINSON 02



DICKINSON 03



DICKINSON 09



DICKINSON 11



DICKINSON 13

### F555

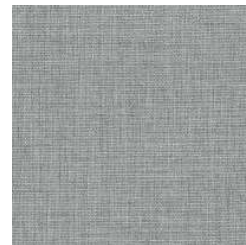
55% Acrylic, 45% PL  
32,000 double rubs



F555 01



F555 03



F555 12



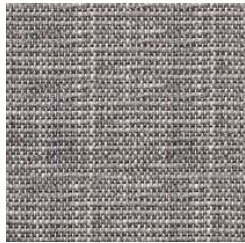
F555 13

### KOS

40% VI, 31% CO,  
21% PL, 8% LI  
16,000 Double Rubs



KOS 01



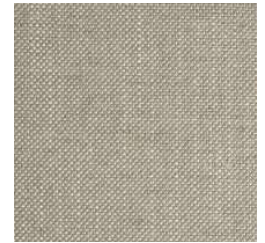
KOS 06

### LIMA

40% VI, 20% PL,  
20% LI, 20% CO  
24,000 double rubs



LIMA 03



LIMA 04



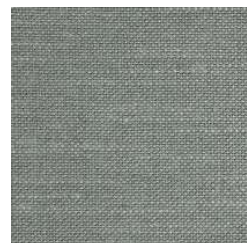
LIMA 05



LIMA 11



LIMA 12



LIMA 14



LIMA 16

### MILOS

40% VI, 31% CO,  
21% PL, 8% LI  
16,000 Double Rubs



MILOS 01



MILOS 06

### PAROS

50% CO, 23% PL,  
18% VI, 9% LI  
18,000 double rubs



PAROS 01



PAROS 06

# SABA FABRICS: 2026 (june)

## EXTRA/LUSSO

### SYROS

40% VI, 31% CO,  
21% PL, 8% LI  
16,000 Double Rubs



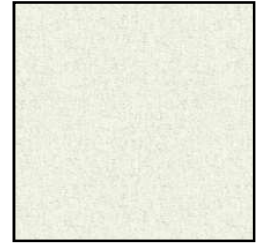
SYROS 01



SYROS 06

### TIME

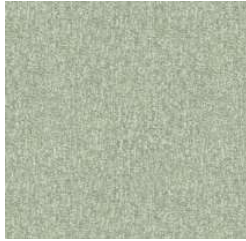
70% PL, 30% CO  
40,000 double rubs



TIME 01



TIME 02



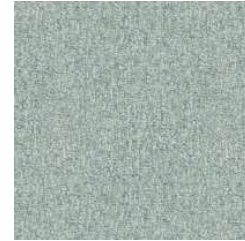
TIME 04



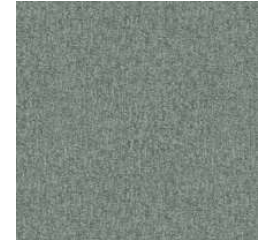
TIME 14



TIME 18



TIME 20



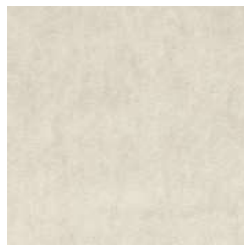
TIME 21

### VIOLET

50% PL, 50% CO  
70,000 double rubs



VIOLET 02



VIOLET 04



VIOLET 05



VIOLET 06



VIOLET 07



VIOLET 08



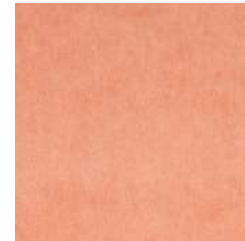
VIOLET 09



VIOLET 11



VIOLET 12



VIOLET 13



VIOLET 15



VIOLET 18



VIOLET 23



VIOLET 25



VIOLET 29



VIOLET 31



VIOLET 33



VIOLET 36



VIOLET 37



VIOLET 38

### X098

58% Acrylic, 42% PES  
35,000 double rubs



X098 04



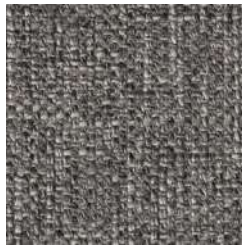
X098 18

# SABA FABRICS: 2026 (june)

## EXTRA/LUSSO

### X098

58% Acrylic, 42% PES  
35,000 double rubs  
... continued



X098 24



X098 26

## VIP/SPECIAL

### 1807 - Velvet

100% Recycled PL  
50,000 double rubs



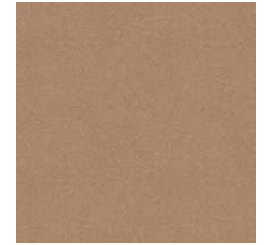
1807 01



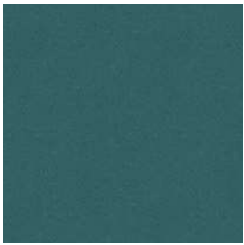
1807 02



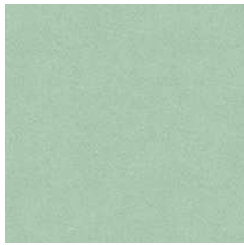
1807 09



1807 11



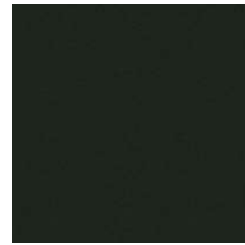
1807 12



1807 13



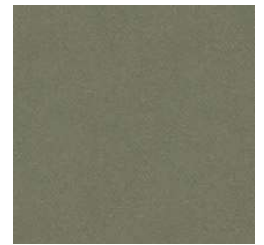
1807 14



1807 15



1807 16



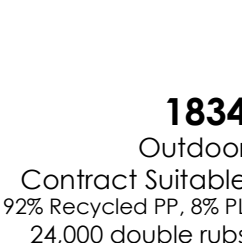
1807 17



1807 18



1807 85

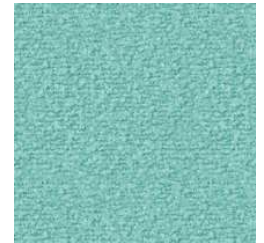


**1834**  
Outdoor  
Contract Suitable  
92% Recycled PP, 8% PL  
24,000 double rubs

1834 01



1834 02



1834 07

### 1835

Outdoor  
Contract Suitable  
100% Recycled PP  
50,000 double rubs



1835 01



1835 02



1835 07



1835 08

### 1836

Outdoor  
Contract Suitable  
93% Recycled PP, 7% PL  
35,000 double rubs



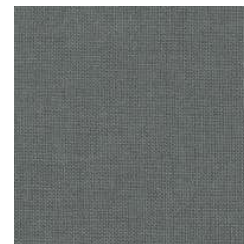
1836 07



1836 08

### AVANT-APRES

41% PC,  
38% PL, 21% CO  
40,000 double rubs



AVANT-APRES 01



AVANT-APRES 02

# SABA FABRICS: 2026 (june)

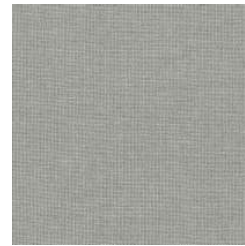
## VIP/SPECIAL

### AVANT-APRES

41% PC,  
38% PL, 21% CO  
40,000 double rubs  
... continued



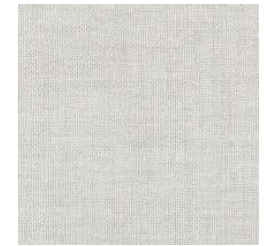
AVANT-APRES 10



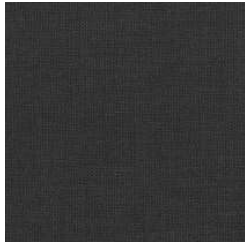
AVANT-APRES 16



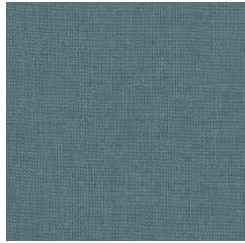
AVANT-APRES 17



AVANT-APRES 18



AVANT-APRES 24



AVANT-APRES 49



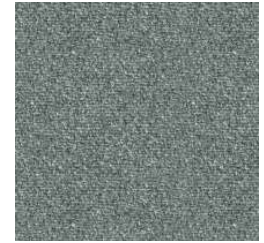
AVANT-APRES 56

### CHIC

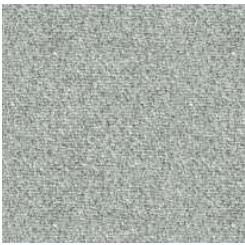
30% VI, 16% WO,  
13% LI, 12% CO, 10% PA,  
9% PL, 6% SE, 4% PC  
30,000 double rubs



CHIC 03



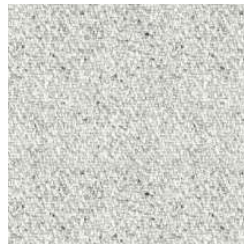
CHIC 05



CHIC 06



CHIC 07



CHIC 08



CHIC 12



### COUTURE

52% CO, 23% VI,  
12% LI, 10% PC, 3% WO  
28,000 double rubs

COUTURE 002



COUTURE 240



COUTURE 260



DEHOR 93-1

### DEHOR

OUTDOOR  
100% PP  
60,000 double rubs



DIPLO 00

### DIPLO

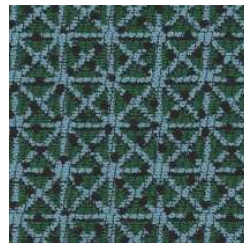
35% CO, 15% LI  
27% VI, 23% PL  
20,000 double rubs



DIPLO 23



DIPLO 24



DIPLO 30



DIPLO 34



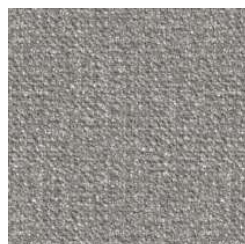
EARTH 01

### EARTH

46% CO, 22% PL,  
16% LI, 9% WO, 7% VI



EARTH 02



EARTH 03



EARTH 07



EARTH 17



EARTH 24



EARTH 27

# SABA FABRICS: 2026 (june)

## VIP/SPECIAL

### ELISIR

39% PL, 38% PC,  
23% CO



ELISIR 05



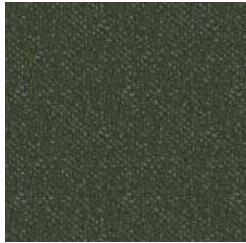
ELISIR 06



ELISIR 07



ELISIR 10



ELISIR 12



ELISIR 13



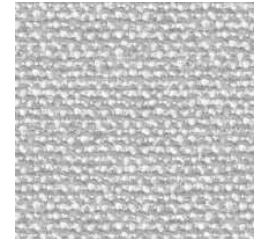
ELISIR 29



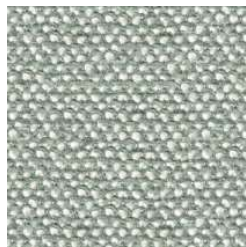
ELISIR 30

### EMBRACE

35% PC, 19% VI,  
16% WV, 12% PL,  
10% LI, 8% CO  
40,000 double rubs



EMBRACE 04



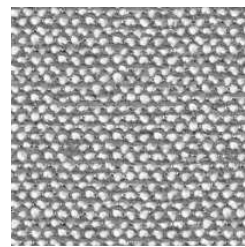
EMBRACE 69



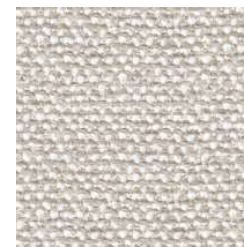
EMBRACE 96



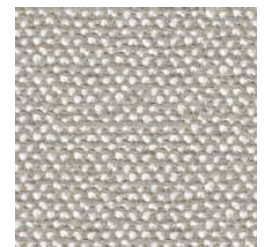
EMBRACE 98C



EMBRACE 141



EMBRACE 144



EMBRACE 146

### ETOILE

100% Trivira



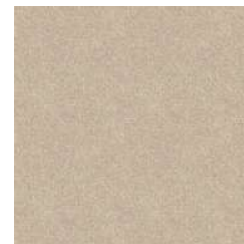
ETOILE 621



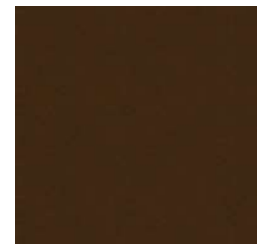
ETOILE 630



ETOILE 641



ETOILE 642



ETOILE 1002



ETOILE 1720



ETOILE 6005



ETOILE 6024

### GALA

35% PL, 23% CO, 20%  
WO, 17% PC, 5% PA  
35,000 double rubs



GALA 04



GALA 06



GALA 61



GALA 80



GALA 81



GALA 120

# SABA FABRICS: 2026 (june)

## VIP/SPECIAL

### J'ADORE

100% PL  
100,000 double rubs



J'ADORE 07



J'ADORE 08



J'ADORE 53

### NUVOLA

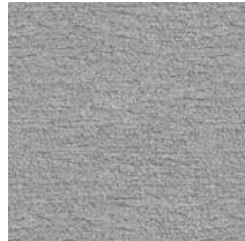
100% PL



NUVOLA 01



NUVOLA 03



NUVOLA 04



NUVOLA 05



NUVOLA 06



NUVOLA 07



NUVOLA 12

### PLAIN

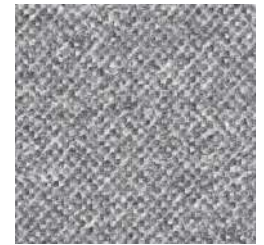
44% LI, 25% PC,  
15% CO, 12% VI, 4% PL  
50,000 double rubs



PLAIN 01



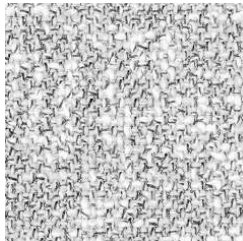
PLAIN 05



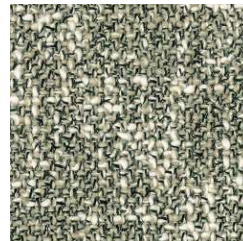
PLAIN 12

### SEVENTY

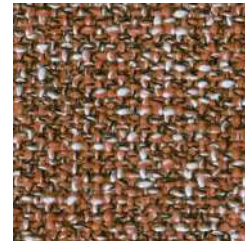
56% CO, 22% PL,  
18% PC, 4% PA  
30,000 double rubs



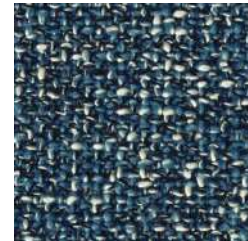
SEVENTY 01



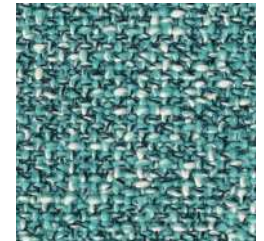
SEVENTY 02



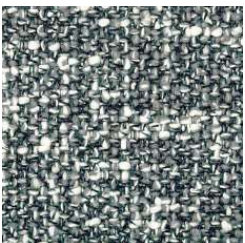
SEVENTY 30



SEVENTY 70



SEVENTY 72



SEVENTY 90



SEVENTY 99

### SIMPLE

34% VI, 31% CO,  
15% LI, 13% PC, 7% PL  
30,000 double rubs



SIMPLE 06



SIMPLE 15



SIMPLE 27



SIMPLE 46



SIMPLE 150

### SWEET/ASTON VELVET

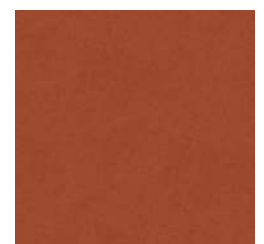
100% PL  
40,000 double rubs



SWEET 150



SWEET 07



SWEET 09

# SABA FABRICS: 2026 (june)

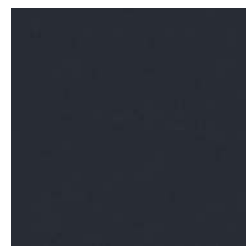
## VIP/SPECIAL

### SWEET/ASTON VELVET

100% PL  
40,000 double rubs  
... continued



SWEET 14



SWEET 24



SWEET 26



SWEET 27



SWEET 28



SWEET 29



SWEET 31



SWEET 50



SWEET 51



SWEET 53



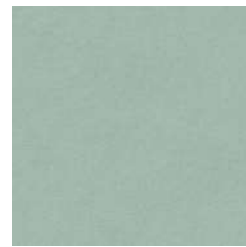
SWEET 54



SWEET 62



SWEET 82



SWEET 87



SWEET 105



SWEET 116



SWEET 125



SWEET 126



SWEET 129



SWEET 138



SWEET 144



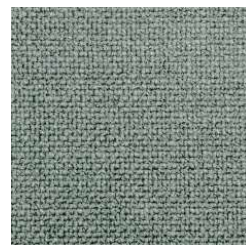
TUNDRA 03



TUNDRA 04



TUNDRA 08



TUNDRA 10



TUNDRA 11

### TUNDRA

42% VI, 38% CO,  
16% PC, 6% PL  
30,000 double rubs



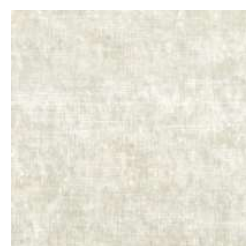
TUNDRA 12



TUNDRA 21

### VEGAS VELVET

55% VI, 45% CO  
50,000 double rubs



VEGAS 01



VEGAS 06



VEGAS 14

# SABA FABRICS: 2026 (june)

## VIP/SPECIAL

### VEGAS VELVET

55% VI, 45% CO  
50,000 double rubs  
...continued



VEGAS 16



VEGAS 20



VEGAS 33



VEGAS 35



VEGAS 44



VEGAS 50



VEGAS 54



VEGAS 57



VEGAS 59



VEGAS 60



VEGAS 63



VEGAS 68



VEGAS 78

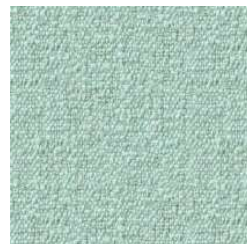
## TOP/ELITE

### 1830

72% Recycled CO,  
24% PL, 4% CO  
70,000 double rubs



1830 01



1830 02



1830 03



1830 04

### 1831

72% Recycled CO,  
24% PL, 4% CO  
30,000 double rubs



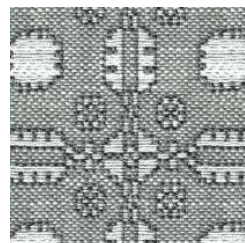
1831 01



1831 02



1831 03



1831 04

### CURLY

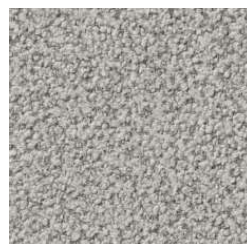
37% PC, 33% CO,  
25% VI, 5% PA  
50,000 double rubs



CURLY 02



CURLY 04



CURLY 08



CURLY 09



CURLY 14

# SABA FABRICS: 2026 (june)

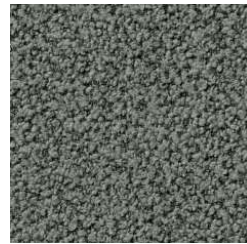
## TOP/ELITE

### CURLY

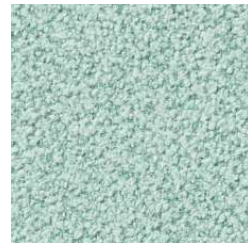
37% PC, 33% CO,  
25% VI, 5% PA  
50,000 double rubs  
... continued



CURLY 21



CURLY 27



CURLY 5101

### LARIO VELVET

100% CO  
80,000 double rubs



LARIO 03



LARIO 14



LARIO 21



LARIO 23



LARIO 26



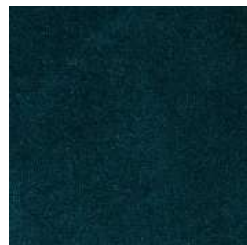
LARIO 28



LARIO 29



LARIO 54



LARIO 58



LARIO 1101



LARIO 1401



LARIO 1402



LARIO 1403



LARIO 1405



LARIO 1406



LARIO 2003



LARIO 2004



LARIO 2006



LARIO 2008



LARIO 2012

### LUCE

43% PL, 29% CO  
20% VI, 8% LI



LUCE 01



LUCE 01-2



LUCE 74



LUCE 90-1

### METIS

40% PC, 30% VI,  
20% WP, 10% PL  
50,000 double rubs



METIS 01



METIS 02



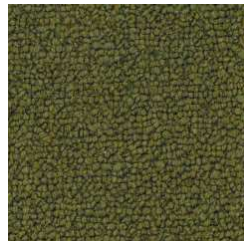
METIS 07

# SABA FABRICS: 2026 (june)

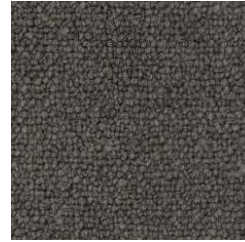
## TOP/ELITE

### METIS

40% PC, 30% VI,  
20% WP, 10% PL  
50,000 double rubs  
... continued



METIS 11



METIS 19



METIS 20



METIS 22



METIS 30



METIS 62



METIS 71

### SAINT MORITZ

80% WO, 20% PA  
80,000 double rubs



SAINT MORITZ 65



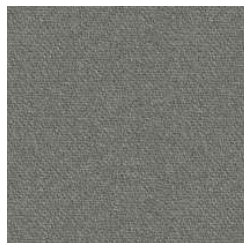
SAINT MORITZ 72



SAINT MORITZ 144



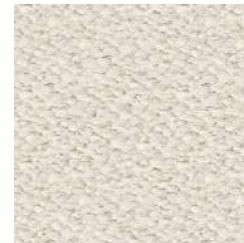
SAINT MORITZ 148



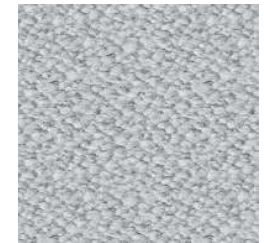
SAINT MORITZ 157

### SIMPOSIO

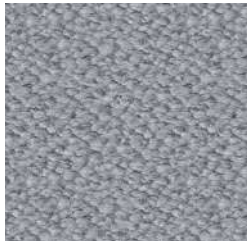
59% LI, 25% VI,  
9% CO, 7% PA  
30,000 double rubs



SIMPOSIO 01/2



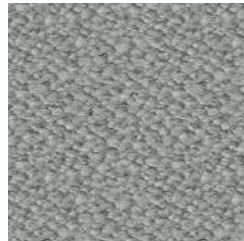
SIMPOSIO 01/11



SIMPOSIO 02/12



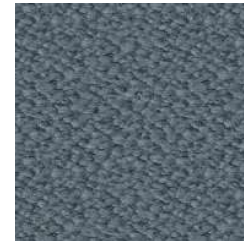
SIMPOSIO 05/3



SIMPOSIO 05/9



SIMPOSIO 07/7



SIMPOSIO 09/8



SIMPOSIO 98/14

### TEDDY

34% VI, 33% PC,  
17% WO, 8% PL,  
4%LI, 4% CO  
50,000 double rubs



TEDDY 01/1



TEDDY 01/2



TEDDY 02/22



TEDDY 05/6



TEDDY 05/10



TEDDY 07/11



TEDDY 07/24



TEDDY 09/23



TEDDY 98/18



TEDDY 98/21

# SABA FABRICS: 2026 (june)

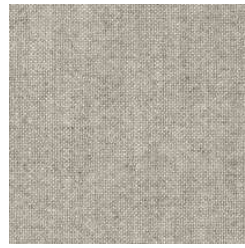
## TOP/ELITE

### VELA

33% CO, 12% LI,  
13% PL, 42% VI  
40,000 double rubs



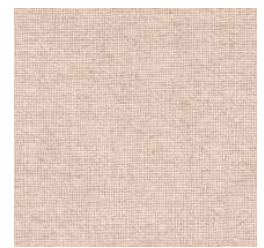
VELA 17



VELA 19



VELA 41



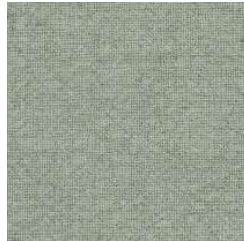
VELA 429



VELA 431



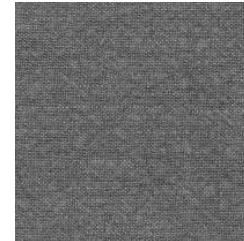
VELA 434



VELA 439



VELA 443



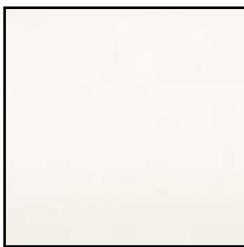
VELA 2056

## CONTRACT Fabrics

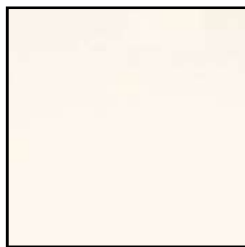
### ROXANA

#### Grade: VIP

100% Trevira CS  
180,000 double rubs



ROXANA 02



ROXANA 03



ROXANA 04



ROXANA 05



ROXANA 07



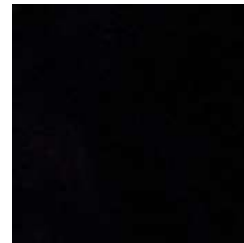
ROXANA 08



ROXANA 10



ROXANA 11



ROXANA 12



ROXANA 16



ROXANA 17



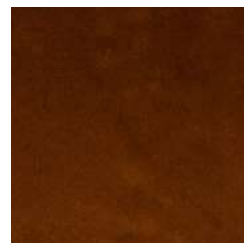
ROXANA 18



ROXANA 19



ROXANA 28



ROXANA 30



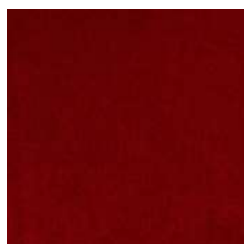
ROXANA 33



ROXANA 35



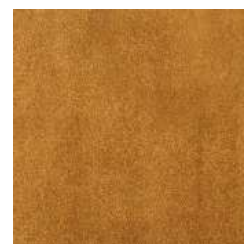
ROXANA 111



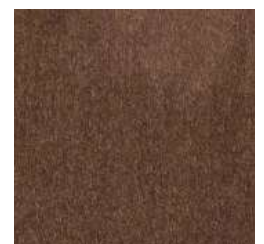
ROXANA 1000



ROXANA 1001



ROXANA 1004



ROXANA 1708

# SABA FABRICS: 2026 (june)

## CONTRACT fabrics

### ROXANA

#### Grade: VIP

100% Trevira CS  
180,000 double rubs  
...continued



ROXANA 1709



ROXANA 1715



ROXANA 1716



ROXANA 1717



ROXANA 1720



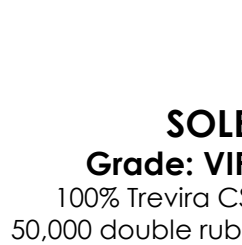
ROXANA 1722



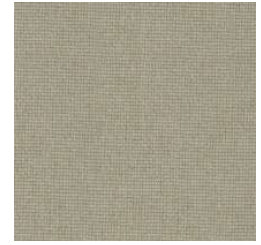
ROXANA 1726



ROXANA 1803



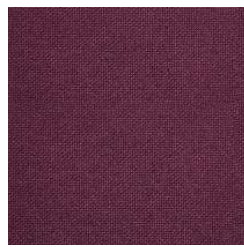
**SOLE**  
**Grade: VIP**  
100% Trevira CS  
50,000 double rubs



SOLE 04



SOLE 05P



SOLE 09P



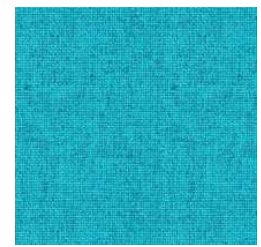
SOLE 011P



SOLE 12P



SOLE 20P



SOLE 22



SOLE 22P



SOLE 23P



SOLE 24P



SOLE 25



SOLE 25P



SOLE 26P



SOLE 29P



SOLE 30P



SOLE 31P



SOLE 32P



SOLE 400



SOLE 402



SOLE 403



SOLE 404



SOLE 405



SOLE 406



SOLE 407

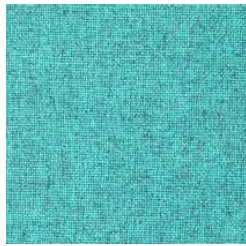


SOLE 409

# SABA FABRICS: 2026 (june)

## CONTRACT fabrics

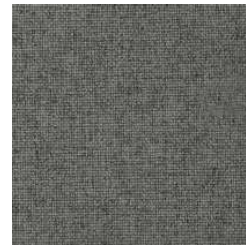
**SOLE**  
**Grade: VIP**  
100% Trevira CS  
50,000 double rubs  
... continued



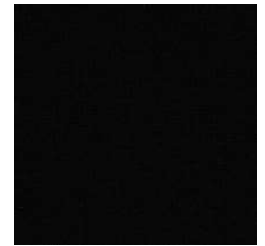
SOLE 412



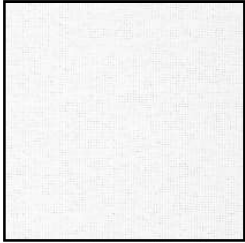
SOLE 414



SOLE 417



SOLE 418



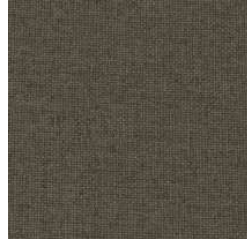
SOLE 420



SOLE 434



SOLE 437



SOLE 441



SOLE 442



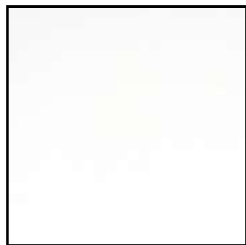
SOLE 443



SOLE 444



**SUPERB  
TREVIRA**  
**Grade: VIP**  
100% Trevira CS  
100,000 double rubs



SUP TREVIRA 5101



SUP TREVIRA 5103



SUP TREVIRA 5106



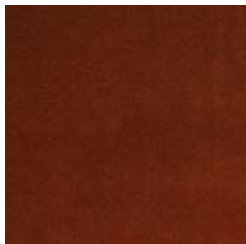
SUP TREVIRA 5107



SUP TREVIRA 5110



SUP TREVIRA 5111



SUP TREVIRA 5112



SUP TREVIRA 5113



SUP TREVIRA 5114



SUP TREVIRA 5116



SUP TREVIRA 5118



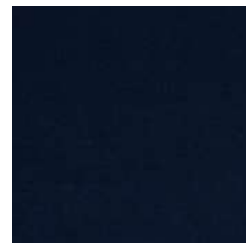
SUP TREVIRA 5124



SUP TREVIRA 5125



SUP TREVIRA 5126



SUP TREVIRA 5127



SUP TREVIRA 5128



SUP TREVIRA 5130



SUP TREVIRA 5131



SUP TREVIRA 5132



SUP TREVIRA 5133



SUP TREVIRA 5134



SUP TREVIRA 5136

# SABA FABRICS: 2026 (june)

## CONTRACT fabrics

### SUPERB TREVIRA

Grade: VIP

100% Trevira CS  
100,000 double rubs  
...continued



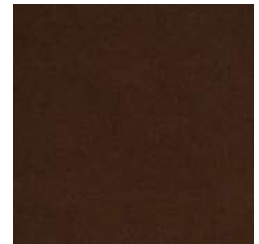
SUP TREVIRA 5142



SUP TREVIRA 5143



SUP TREVIRA 5144



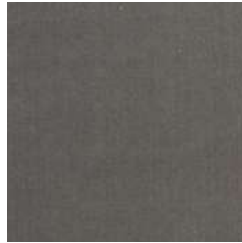
SUP TREVIRA 5145



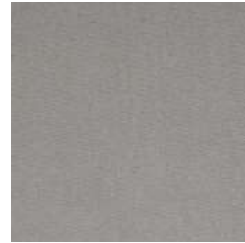
SUP TREVIRA 5147



SUP TREVIRA 5149



SUP TREVIRA 5150



SUP TREVIRA 5152

### TADAO

Grade: ELITE

97% Trevira CS  
3% Fire-Retardent PA  
40,000 double rubs



TADAO 01



TADAO 02



TADAO 03



TADAO 04



TADAO 05



TADAO 07



TADAO 08



TADAO 09



TADAO 10



TADAO 11



TADAO 12



TADAO 13



TADAO 15



TADAO 16



TADAO 17



TADAO 18



TADAO 19



TADAO 20



TADAO 21



TADAO 23

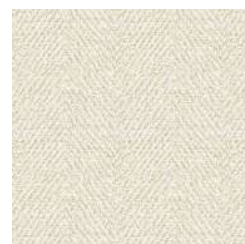


TADAO 25

### DRAA

Grade: ROYAL

OUTDOOR  
8% PL, 9% Recy PET,  
36% Recy PP, 47% PC



DRAA 01



DRAA 02



DRAA 18

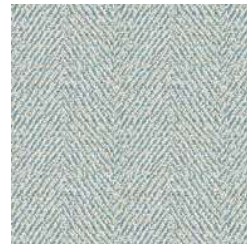
# SABA FABRICS: 2026 (june)

## CONTRACT fabrics

**DRAA**  
**Grade: ROYAL**  
OUTDOOR  
8% PL, 9% Recy PET,  
36% Recy PP, 47% PC  
... continued



DRAA 29



DRAA 32

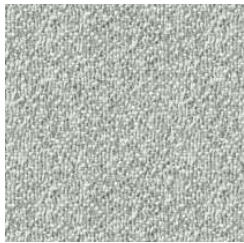
**FRAME**  
**Grade: ROYAL**  
OUTDOOR  
100% PL  
50,000 double rubs



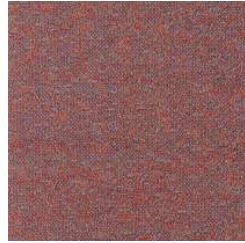
FRAME 01



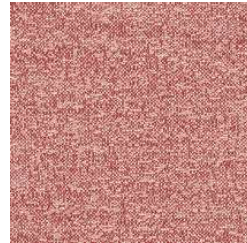
FRAME 06



FRAME 08



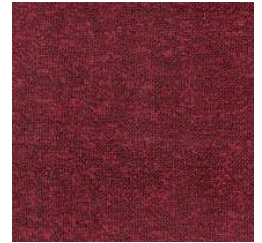
FRAME 14



FRAME 15



FRAME 26

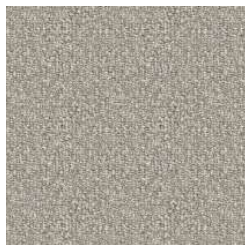


FRAME 30

**SIWA**  
**Grade: ROYAL**  
OUTDOOR  
5% PL,  
46% Recy PP, 49% PC



SIWA 01



SIWA 08



SIWA 28



SIWA 29

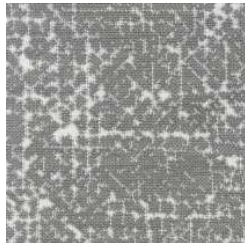


SIWA 32

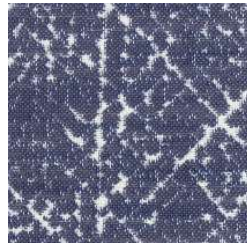
**SUNNY**  
**Grade: ROYAL**  
OUTDOOR  
100% PL  
50,000 double rubs



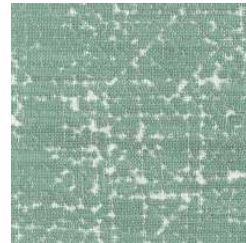
SUNNY 01



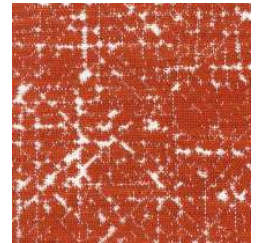
SUNNY 03



SUNNY 06



SUNNY 07



SUNNY 09