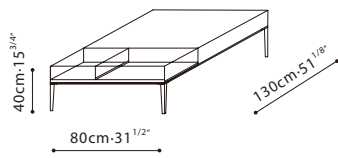




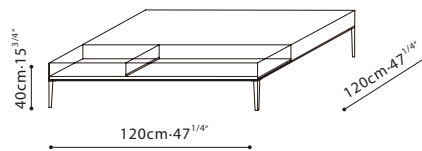
FLAMINGO GLASS / TOP: Top and drawer front comes in Grey Oak or Graphite oak veneer. **DRAWERS:** Built-in drawer structure comes in melamine. Drawers come with full extension invisible drawer runners with dampers. **STORAGE BOX:** storage box is constructed of tinted tempered glass. **LEGS:** Base is constructed on a steel frame and finished in black metallic paint.

C06C0903



*One built-in drawer

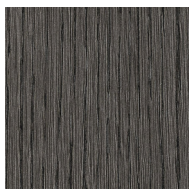
C06C0904



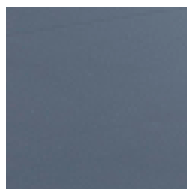
*One built-in drawer



Grey Oak



Graphite Oak



Smoke Tempered Glass