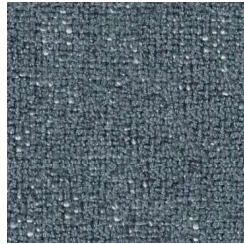


# SABA FABRICS: 2026 (march)

C/E:

## CLEAN

82% PL, 18% Rayon  
100,000 double rubs



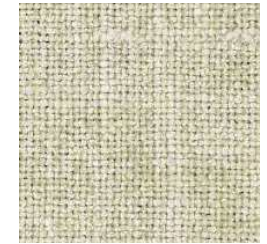
CLEAN 04



CLEAN 05



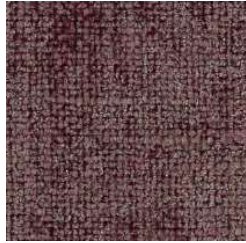
CLEAN 06



CLEAN 07



CLEAN 14



CLEAN 19



CLEAN 18

## MELANGE

54% Acrylic, 46% PL  
40,000 double rubs



MELANGE 01



MELANGE 02



MELANGE 03



MELANGE 04



MELANGE 09

## SMILE

100% CO  
32,000 double rubs



SMILE 02



SMILE 07



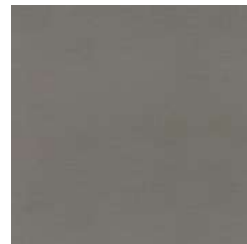
SMILE 09



SMILE 13



SMILE 21



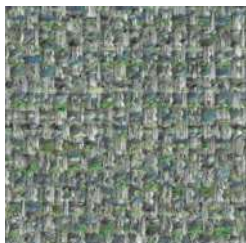
SMILE 46

## STUOIA

100% CO  
40,000 double rubs



STUOIA 01



STUOIA 02



STUOIA 03



STUOIA 04



STUOIA 09

## X706

100% PL  
100,000 double rubs



X706 05



X706 08



X706 09



X706 10



X706 17



X706 19



X706 20

# SABA FABRICS: 2026 (march)

**C/E:**

**X706**  
100%PL  
100,000 double rubs  
...continued



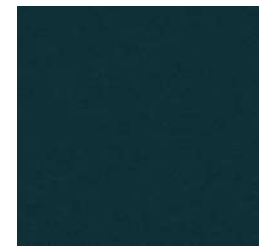
X706 21



X706 22



X706 23



X706 25

**EXTRA/LUSSO**

**CHARME**  
95% PL, 55% CO  
55,000 double rubs  
Water Repellent



CHARME 100



CHARME 111



CHARME 400



CHARME 401



CHARME 404



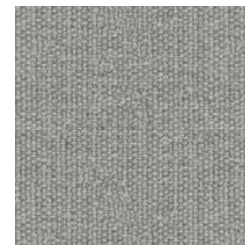
CHARME 406



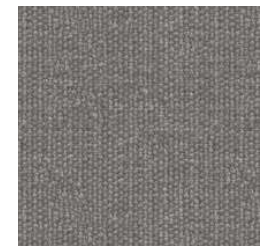
CHARME 500



CHARME 501



CHARME 601



CHARME 603



CHARME 604



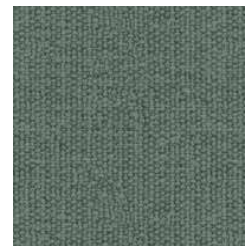
CHARME 605



CHARME 606



CHARME 800



CHARME 802

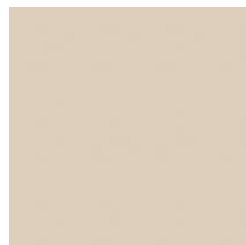


CHARME 900

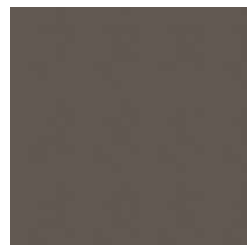
**CLOUD**  
**faux leather**  
31% CO,  
68% PVC, 1% PU  
51,200 double rubs



CLOUD 2E3



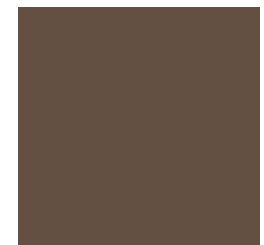
CLOUD 4EZ



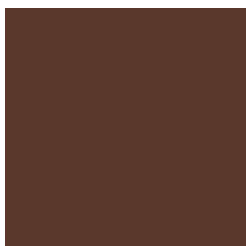
CLOUD 4G9



CLOUD 5AS



CLOUD 5EL



CLOUD 5EM



CLOUD 901

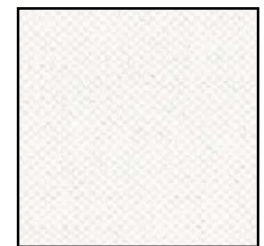
**CRETA**  
63% CO, 37% LI  
32,500 double rubs



CRETA 12



CRETA 14



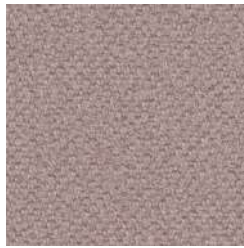
CRETA 15

# SABA FABRICS: 2026 (march)

## EXTRA/LUSSO

### CRETA

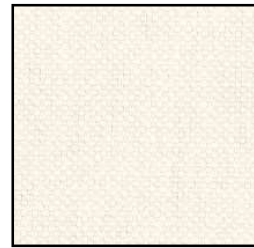
63% CO, 37% LI  
32,500 double rubs  
...continued



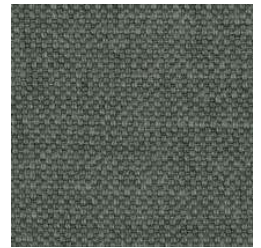
CRETA 16



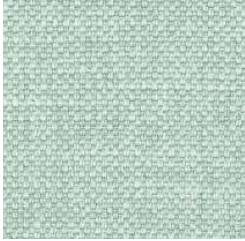
CRETA 1D



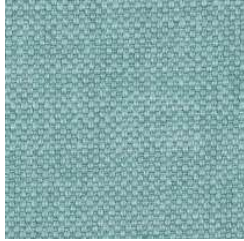
CRETA 2A



CRETA 2E



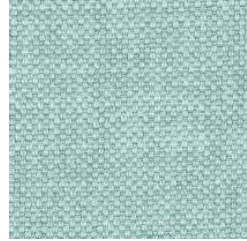
CRETA 3E



CRETA 4B



CRETA 4D



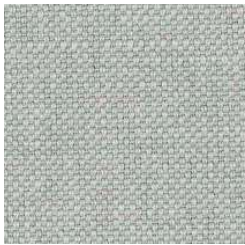
CRETA 5B



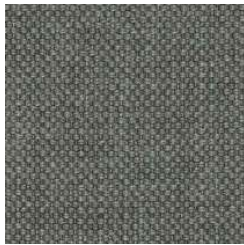
CRETA 69



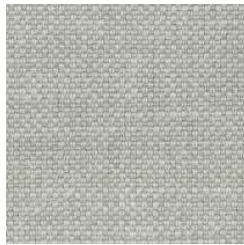
CRETA 70



CRETA 71



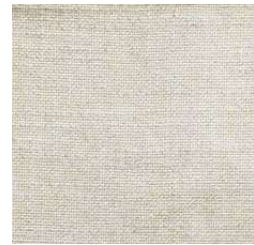
CRETA 72



CRETA 94

### DARWIN

58% VI,  
11% LI, 31% CO  
40,000 double rubs



DARWIN 07



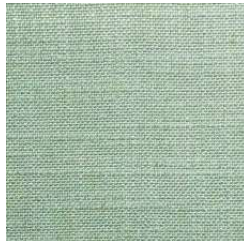
DARWIN 140



DARWIN 151



DARWIN 1633



DARWIN 18



DARWIN 25

### DICKINSON

70% VI, 30% LI  
25,000 double rubs



DICKINSON 14



DICKINSON 02



DICKINSON 03



DICKINSON 09



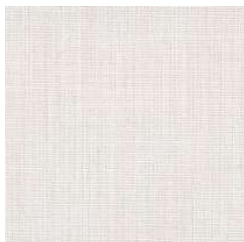
DICKINSON 11



DICKINSON 13

### F555

55% Acrylic, 45% PL  
32,000 double rubs



F555 01



F555 03



F555 12



F555 13

# SABA FABRICS: 2026 (march)

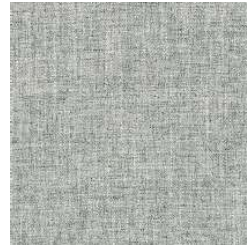
## EXTRA/LUSSO

### GATSBY

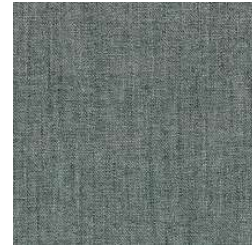
70% VI, 30% LI  
25,000 double rubs



GATSBY 02



GATSBY 04



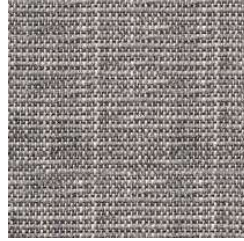
GATSBY 05

### KOS

40% VI, 31% CO,  
21% PL, 8% LI  
16,000 Double Rubs



KOS 01



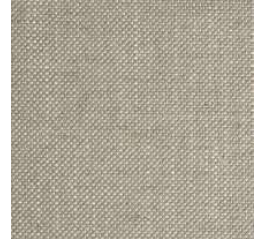
KOS 06

### LIMA

40% VI, 20% PL,  
20% LI, 20% CO  
24,000 double rubs



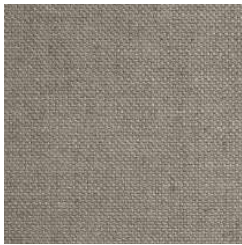
LIMA 03



LIMA 04



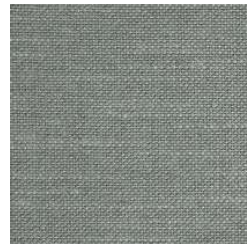
LIMA 05



LIMA 11



LIMA 12



LIMA 14



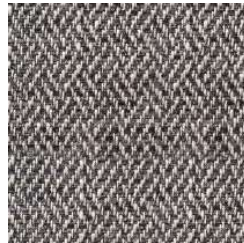
LIMA 16

### MILOS

40% VI, 31% CO,  
21% PL, 8% LI  
16,000 Double Rubs



MILOS 01



MILOS 06

### PAROS

50% CO, 23% PL,  
18% VI, 9% LI  
18,000 double rubs



PAROS 01



PAROS 06

### SYROS

40% VI, 31% CO,  
21% PL, 8% LI  
16,000 Double Rubs



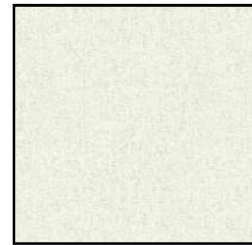
SYROS 01



SYROS 06

### TIME

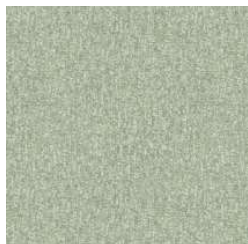
70% PL, 30% CO  
40,000 double rubs



TIME 01



TIME 02



TIME 04



TIME 14



TIME 18



TIME 20



TIME 21

# SABA FABRICS: 2026 (march)

## EXTRA/LUSSO

**VIOLET**  
50% PL, 50% CO  
70,000 double rubs



VIOLET 02



VIOLET 04



VIOLET 05



VIOLET 06



VIOLET 07



VIOLET 08



VIOLET 09



VIOLET 11



VIOLET 12



VIOLET 13



VIOLET 15



VIOLET 18



VIOLET 23



VIOLET 25



VIOLET 29



VIOLET 31



VIOLET 33



VIOLET 36



VIOLET 37



VIOLET 38

**X098**  
58% Acrylic, 42% PES  
35,000 double rubs



X098 04



X098 18



X098 24



X098 26

## VIP/SPECIAL

**1807 - Velvet**  
100% Recycled PL  
50,000 double rubs



1807 01



1807 02



1807 09



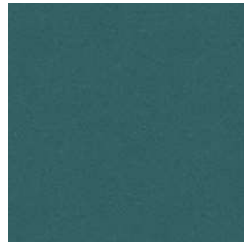
1807 11

# SABA FABRICS: 2026 (march)

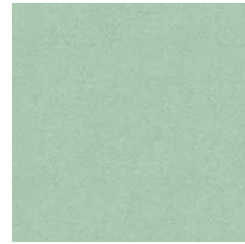
## VIP/SPECIAL

### 1807 - Velvet

100% Recycled PL  
50,000 double rubs



1807 12



1807 13



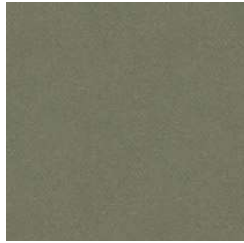
1807 14



1807 15



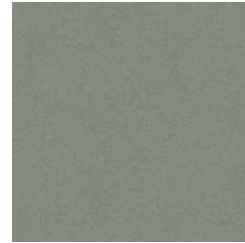
1807 16



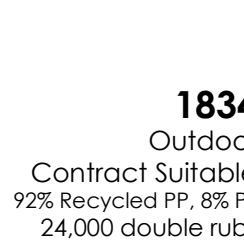
1807 17



1807 18

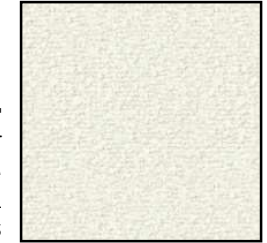


1807 85



### 1834

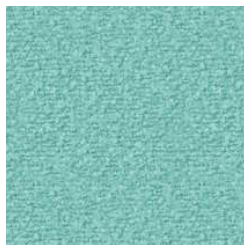
Outdoor  
Contract Suitable  
92% Recycled PP, 8% PL  
24,000 double rubs



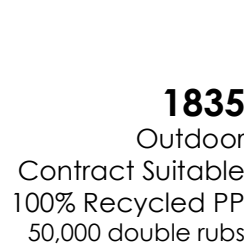
1834 01



1834 02

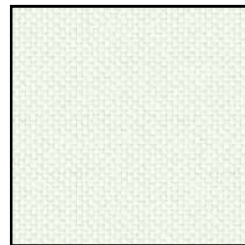


1834 07

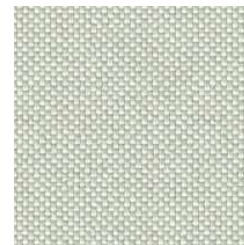


### 1835

Outdoor  
Contract Suitable  
100% Recycled PP  
50,000 double rubs



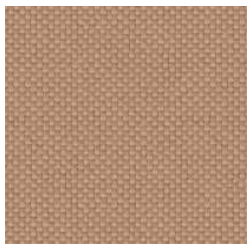
1835 01



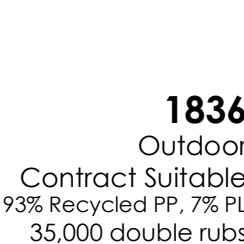
1835 02



1835 07



1835 08



### 1836

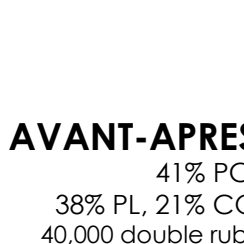
Outdoor  
Contract Suitable  
93% Recycled PP, 7% PL  
35,000 double rubs



1836 07



1836 08



### AVANT-APRES

41% PC,  
38% PL, 21% CO  
40,000 double rubs



AVANT-APRES 01



AVANT-APRES 02



AVANT-APRES 10



AVANT-APRES 16



AVANT-APRES 17



AVANT-APRES 18



AVANT-APRES 24



AVANT-APRES 49

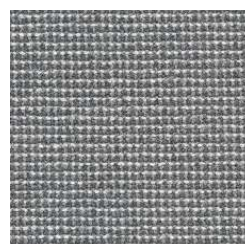


AVANT-APRES 56



### CAPRI

50% CO,  
30% VI, 14% LI  
36,000 double rubs



CAPRI 40



CAPRI 44



CAPRI 60

# SABA FABRICS: 2026 (march)

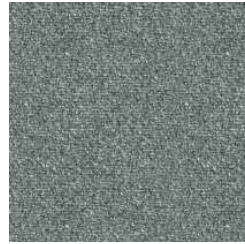
## VIP/SPECIAL

### CHIC

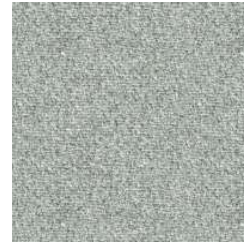
30% VI, 16% WO,  
13% LI, 12% CO, 10% PA,  
9% PL, 6% SE, 4% PC  
30,000 double rubs



CHIC 03



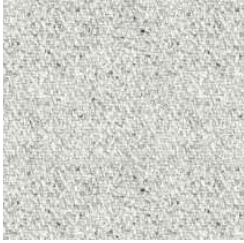
CHIC 05



CHIC 06



CHIC 07



CHIC 08



CHIC 12

### COUTURE

52% CO, 23% VI,  
12% LI, 10% PC, 3% WO  
28,000 double rubs



COUTURE 002



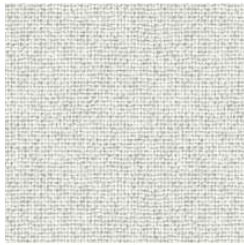
COUTURE 240



COUTURE 260

### DEHOR

Outdoor  
Outdoor Suitable  
100% PP  
60,000 double rubs



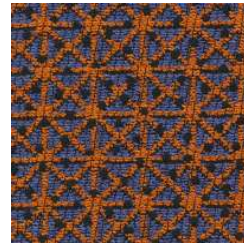
DEHOR 93-1

### DIPLO

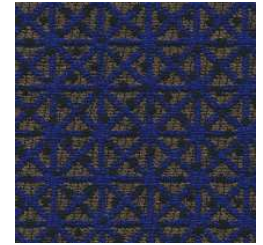
35% CO, 15% LI  
27% VI, 23% PL  
20,000 double rubs



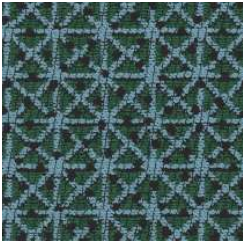
DIPLO 00



DIPLO 23



DIPLO 24



DIPLO 30



DIPLO 34

### EARTH

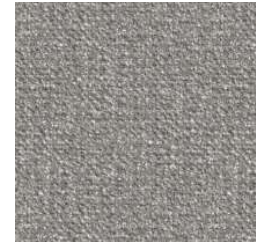
46% CO, 22% PL,  
16% LI, 9% WO, 7% VI



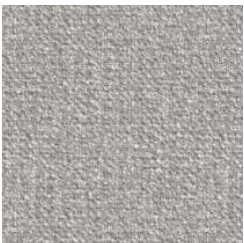
EARTH 01



EARTH 02



EARTH 03



EARTH 07



EARTH 17



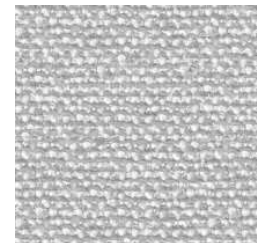
EARTH 24



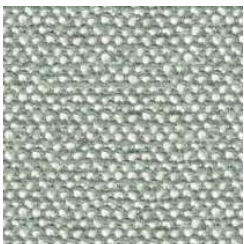
EARTH 27

### EMBRACE

35% PC, 19% VI,  
16% WV, 12% PL,  
10% LI, 8% CO  
40,000 double rubs



EMBRACE 04



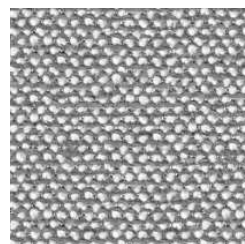
EMBRACE 69



EMBRACE 96



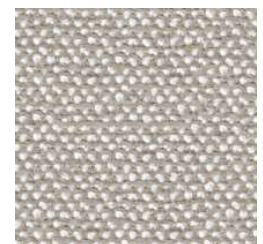
EMBRACE 98C



EMBRACE 141



EMBRACE 144



EMBRACE 146

# SABA FABRICS: 2026 (march)

## VIP/SPECIAL

### GALA

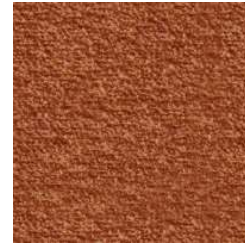
35% PL, 23% CO, 20%  
WO, 17% PC, 5% PA  
35,000 double rubs



GALA 04



GALA 06



GALA 61



GALA 80



GALA 81



GALA 120

### GAUCHO

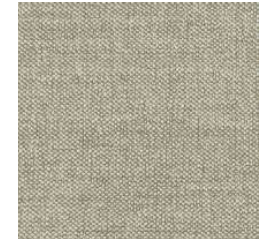
35% VI, 30% PC,  
20% CO, 15% PL  
30,000 double rubs



GAUCHO 02



GAUCHO 03



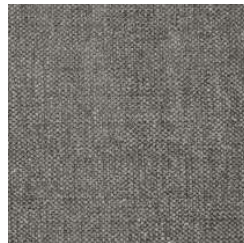
GAUCHO 04



GAUCHO 06



GAUCHO 13



GAUCHO 16

### GESA

56% CO,  
30% VI, 14% LI  
36,000 double rubs



GESA 33



GESA 40



GESA 41

### J'ADORE

100% PL  
100,000 double rubs



J'ADORE 07



J'ADORE 08



J'ADORE 53

### NUVOLA

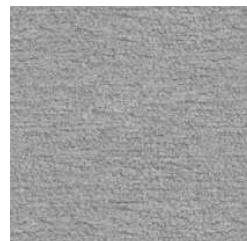
100% PL



NUVOLA 01



NUVOLA 03



NUVOLA 04



NUVOLA 05



NUVOLA 06



NUVOLA 07



NUVOLA 12

### PLAIN

44% LI, 25% PC,  
15% CO, 12% VI, 4% PL  
50,000 double rubs



PLAIN 01



PLAIN 05



PLAIN 12

# SABA FABRICS: 2026 (march)

## VIP/SPECIAL

### PLANET

100% LI  
25,600 double rubs



PLANET 502



PLANET 504



PLANET 515



PLANET 516



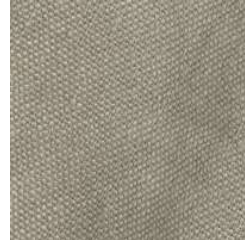
PLANET 534



PLANET 537



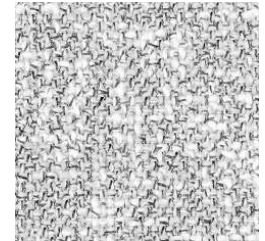
PLANET 545



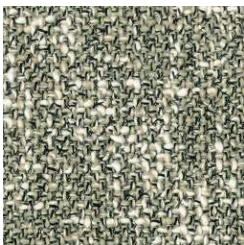
PLANET 548

### SEVENTY

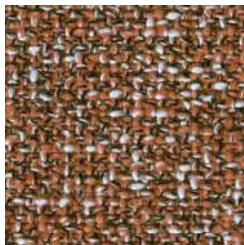
56% CO, 22% PL,  
18% PC, 4% PA  
30,000 double rubs



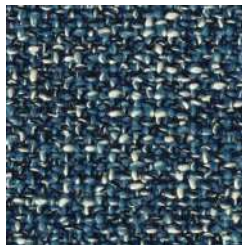
SEVENTY 01



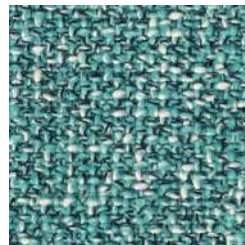
SEVENTY 02



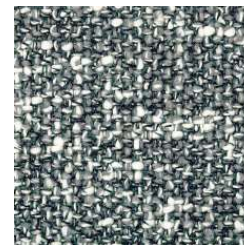
SEVENTY 30



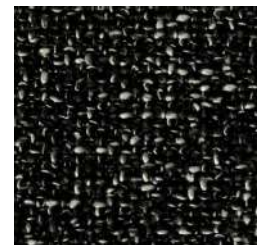
SEVENTY 70



SEVENTY 72



SEVENTY 90



SEVENTY 99

### SIMPLE

34% VI, 31% CO,  
15% LI, 13% PC, 7% PL  
30,000 double rubs



SIMPLE 06



SIMPLE 15



SIMPLE 27



SIMPLE 46



SIMPLE 150

### SWEET/ASTON VELVET

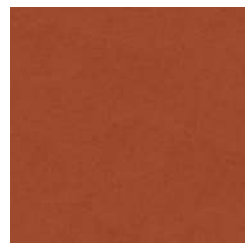
100% PL  
40,000 double rubs



SWEET 150



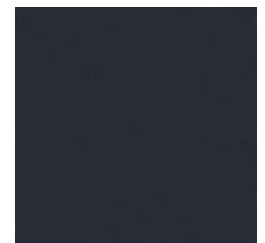
SWEET 07



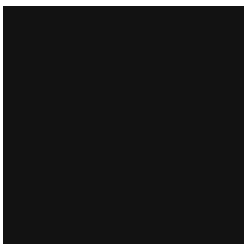
SWEET 09



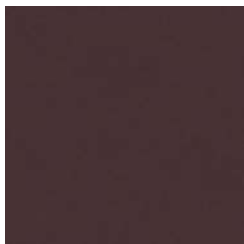
SWEET 14



SWEET 24



SWEET 26



SWEET 27



SWEET 28



SWEET 29



SWEET 31



SWEET 50

# SABA FABRICS: 2026 (march)

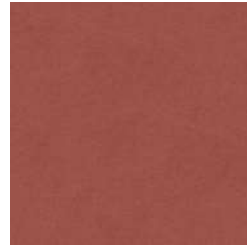
## VIP/SPECIAL

### SWEET/ASTON VELVET

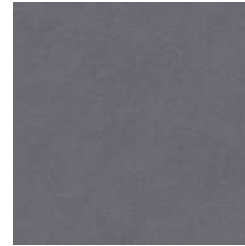
100% PL  
40,000 double rubs  
...continued



SWEET 51



SWEET 53



SWEET 54



SWEET 62



SWEET 82



SWEET 87



SWEET 105



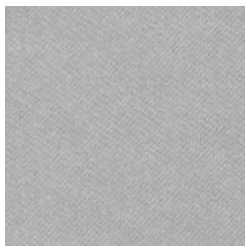
SWEET 116



SWEET 125



SWEET 126



SWEET 129



SWEET 138



SWEET 144

### TUNDRA

42% VI, 38% CO,  
16% PC, 6% PL  
30,000 double rubs



TUNDRA 03



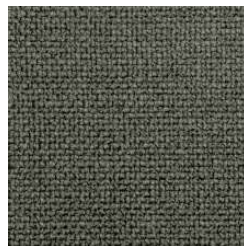
TUNDRA 04



TUNDRA 08



TUNDRA 10



TUNDRA 11



TUNDRA 12



TUNDRA 21

### VEGAS VELVET

55% VI, 45% CO  
50,000 double rubs



VEGAS 01



VEGAS 06



VEGAS 14



VEGAS 16



VEGAS 20



VEGAS 33



VEGAS 35



VEGAS 44



VEGAS 50



VEGAS 54



VEGAS 57

# SABA FABRICS: 2026 (march)

## VIP/SPECIAL

### VEGAS VELVET

55% VI, 45% CO  
50,000 double rubs  
...continued



VEGAS 59



VEGAS 60



VEGAS 63



VEGAS 68



VEGAS 78

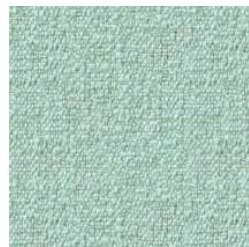
## TOP/ELITE

### 1830

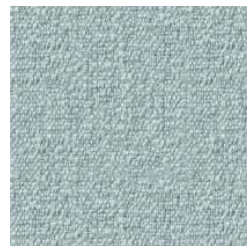
72% Recycled CO,  
24% PL, 4% CO  
70,000 double rubs



1830 01



1830 02



1830 03



1830 04

### 1831

72% Recycled CO,  
24% PL, 4% CO  
30,000 double rubs



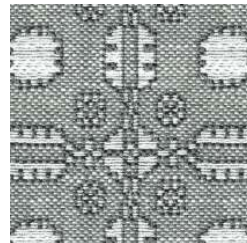
1831 01



1831 02



1831 03



1831 04

### CURLY

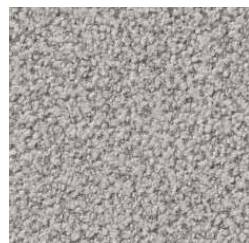
37% PC, 33% CO,  
25% VI, 5% PA  
50,000 double rubs



CURLY 02



CURLY 04



CURLY 08



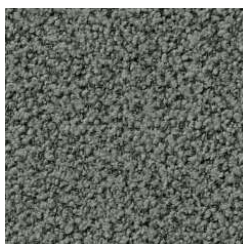
CURLY 09



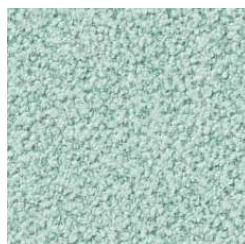
CURLY 14



CURLY 21



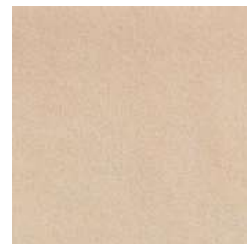
CURLY 27



CURLY 5101

### LARIO VELVET

100% CO  
80,000 double rubs



LARIO 03



LARIO 14

# SABA FABRICS: 2026 (march)

## TOP/ELITE

### LARIO VELVET

100% CO  
80,000 double rubs  
...continued



LARIO 21



LARIO 23



LARIO 26



LARIO 28



LARIO 29



LARIO 54



LARIO 58



LARIO 1101



LARIO 1401



LARIO 1402



LARIO 1403



LARIO 1405



LARIO 1406



LARIO 2003



LARIO 2004



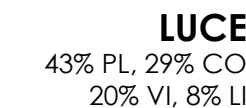
LARIO 2006



LARIO 2008



LARIO 2012



**LUCE**  
43% PL, 29% CO  
20% VI, 8% LI



LUCE 01



LUCE 01-2



LUCE 74



LUCE 90-1



METIS 01



METIS 02



METIS 07



METIS 11

**METIS**  
40% PC, 30% VI,  
20% WP, 10% PL  
50,000 double rubs



METIS 19



METIS 20



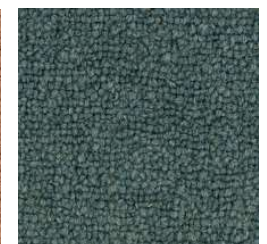
METIS 22



METIS 30



METIS 62



METIS 71

# SABA FABRICS: 2026 (march)

## TOP/ELITE

### SAINT MORITZ

80% WO, 20% PA  
80,000 double rubs



SAINT MORITZ 65



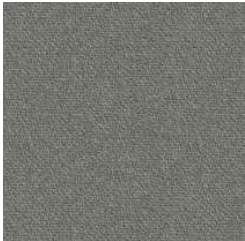
SAINT MORITZ 72



SAINT MORITZ 144



SAINT MORITZ 148



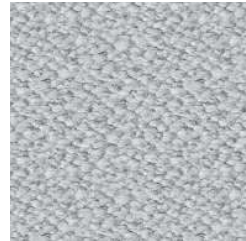
SAINT MORITZ 157

### SIMPOSIO

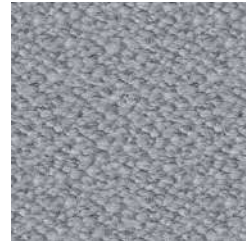
59% LI, 25% VI,  
9% CO, 7% PA  
30,000 double rubs



SIMPOSIO 01/2



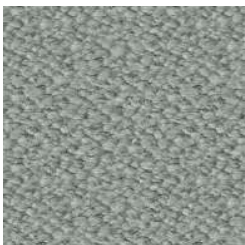
SIMPOSIO 01/11



SIMPOSIO 02/12



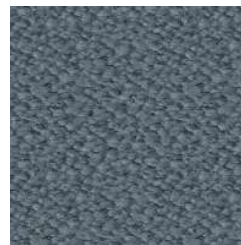
SIMPOSIO 05/3



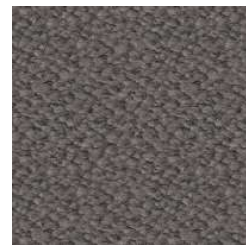
SIMPOSIO 05/9



SIMPOSIO 07/7



SIMPOSIO 09/8



SIMPOSIO 98/14

### TEDDY

34% VI, 33% PC,  
17% WO, 8% PL,  
4% LI, 4% CO  
50,000 double rubs



TEDDY 01/1



TEDDY 01/2



TEDDY 02/22



TEDDY 05/6



TEDDY 05/10



TEDDY 07/11



TEDDY 07/24



TEDDY 09/23



TEDDY 98/18



TEDDY 98/21

### VELA

33% CO, 12% LI,  
13% PL, 42% VI  
40,000 double rubs



VELA 17



VELA 19



VELA 41



VELA 429



VELA 431



VELA 434



VELA 439

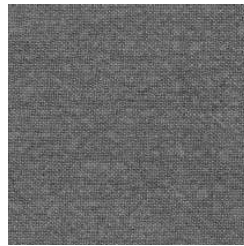


VELA 443

# SABA FABRICS: 2026 (march)

## TOP/ELITE

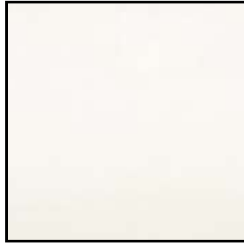
**VELA**  
33% CO, 12% LI,  
13% PL, 42% VI  
40,000 double rubs  
...continued



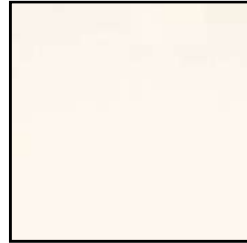
VELA 2056

## CONTRACT Fabrics

**ROXANA**  
**Grade: VIP**  
100% Trevira CS  
180,000 double rubs



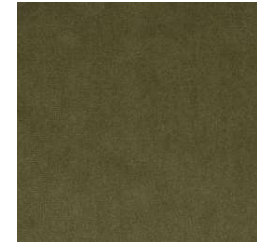
ROXANA 02



ROXANA 03



ROXANA 04



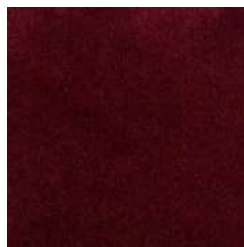
ROXANA 05



ROXANA 07



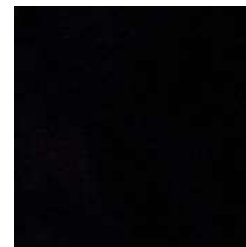
ROXANA 08



ROXANA 10



ROXANA 11



ROXANA 12



ROXANA 16



ROXANA 17



ROXANA 18



ROXANA 19



ROXANA 28



ROXANA 30



ROXANA 33



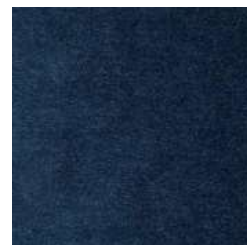
ROXANA 35



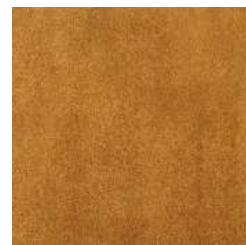
ROXANA 111



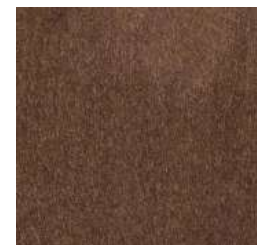
ROXANA 1000



ROXANA 1001



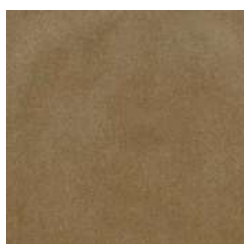
ROXANA 1004



ROXANA 1708



ROXANA 1709



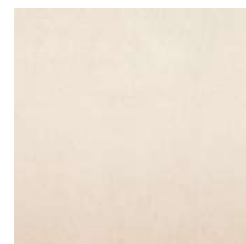
ROXANA 1715



ROXANA 1716



ROXANA 1717



ROXANA 1720



ROXANA 1722

# SABA FABRICS: 2026 (march)

## CONTRACT fabrics

### ROXANA

Grade: VIP

100% Trevira CS  
180,000 double rubs  
...continued



ROXANA 1726



ROXANA 1803

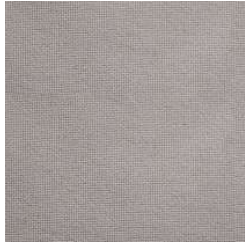
### SOLE

Grade: VIP

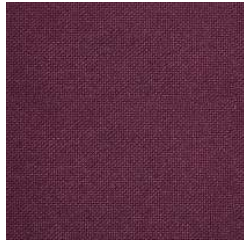
100% Trevira CS  
50,000 double rubs



SOLE 04



SOLE 05P



SOLE 09P



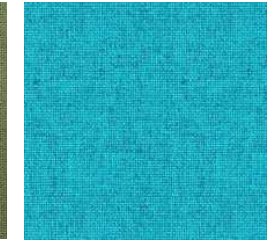
SOLE 011P



SOLE 12P



SOLE 20P



SOLE 22



SOLE 22P



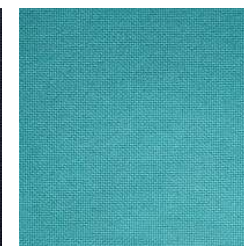
SOLE 23P



SOLE 24P



SOLE 25



SOLE 25P



SOLE 26P



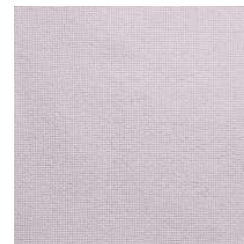
SOLE 29P



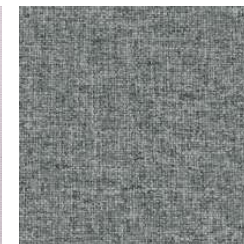
SOLE 30P



SOLE 31P



SOLE 32P



SOLE 400



SOLE 402



SOLE 403



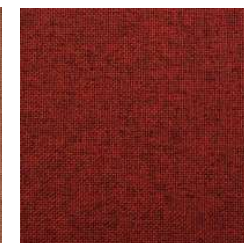
SOLE 404



SOLE 405



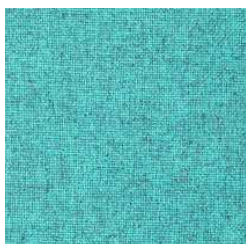
SOLE 406



SOLE 407



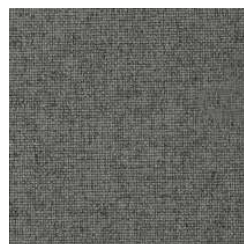
SOLE 409



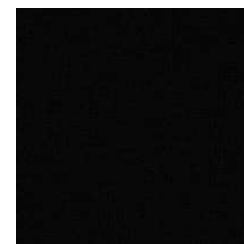
SOLE 412



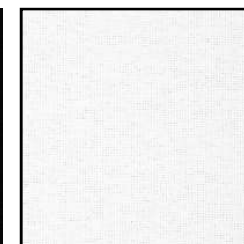
SOLE 414



SOLE 417



SOLE 418



SOLE 420



SOLE 434

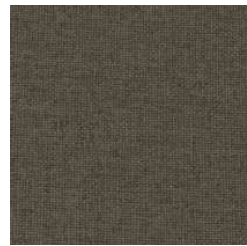
# SABA FABRICS: 2026 (march)

## CONTRACT fabrics

**SOLE**  
**Grade: VIP**  
100% Trevira CS  
50,000 double rubs  
...continued



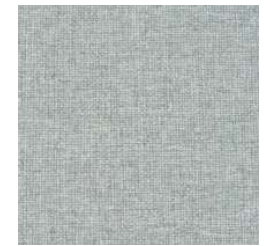
SOLE 437



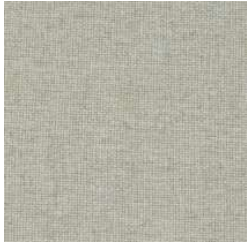
SOLE 441



SOLE 442

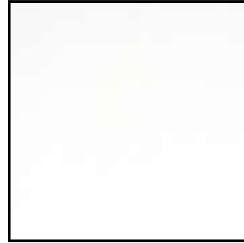


SOLE 443



SOLE 444

**SUPERB  
TREVIRA**  
**Grade: VIP**  
100% Trevira CS  
100,000 double rubs



SUP TREVIRA 5101



SUP TREVIRA 5103



SUP TREVIRA 5106



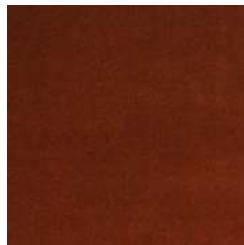
SUP TREVIRA 5107



SUP TREVIRA 5110



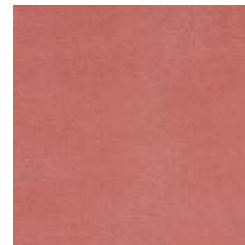
SUP TREVIRA 5111



SUP TREVIRA 5112



SUP TREVIRA 5113



SUP TREVIRA 5114



SUP TREVIRA 5116



SUP TREVIRA 5118



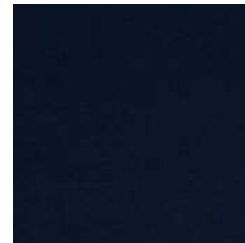
SUP TREVIRA 5124



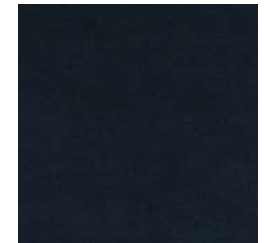
SUP TREVIRA 5125



SUP TREVIRA 5126



SUP TREVIRA 5127



SUP TREVIRA 5128



SUP TREVIRA 5130



SUP TREVIRA 5131



SUP TREVIRA 5132



SUP TREVIRA 5133



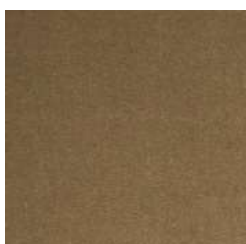
SUP TREVIRA 5134



SUP TREVIRA 5136



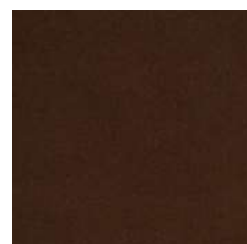
SUP TREVIRA 5142



SUP TREVIRA 5143



SUP TREVIRA 5144



SUP TREVIRA 5145



SUP TREVIRA 5147



SUP TREVIRA 5149

# SABA FABRICS: 2026 (march)

## CONTRACT fabrics

### SUPERB TREVIRA

**Grade: VIP**

100% Trevira CS  
100,000 double rubs  
...continued



SUP TREVIRA 5150



SUP TREVIRA 5152

### TADAO

**Grade: ELITE**

97% Trevira CS  
3% Fire-Retardent PA  
40,000 double rubs



TADAO 01



TADAO 02



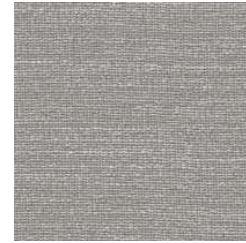
TADAO 03



TADAO 04



TADAO 05



TADAO 07



TADAO 08



TADAO 09



TADAO 10



TADAO 11



TADAO 12



TADAO 13



TADAO 15



TADAO 16



TADAO 17



TADAO 18



TADAO 19



TADAO 20



TADAO 21



TADAO 23



TADAO 25

### FRAME

**Grade: ROYAL**

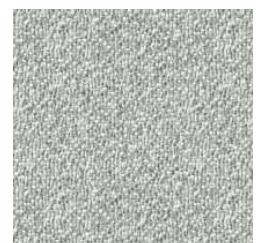
OUTDOOR  
100% PL  
50,000 double rubs



FRAME 01



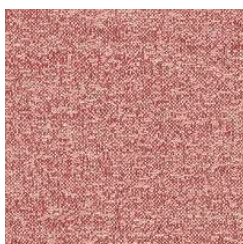
FRAME 06



FRAME 08



FRAME 14



FRAME 15



FRAME 26



FRAME 30

### SUNNY

**Grade: ROYAL**

OUTDOOR  
100% PL  
50,000 double rubs



SUNNY 01

# SABA FABRICS: 2026 (march)

**CONTRACT fabrics**

**SUNNY**

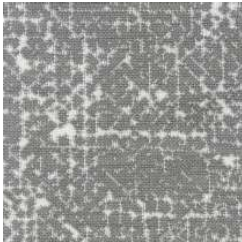
**Grade: ROYAL**

OUTDOOR

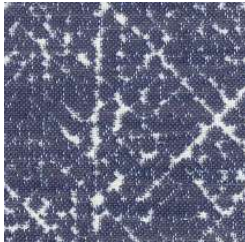
100% PL

50,000 double rubs

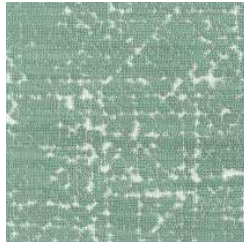
...continued



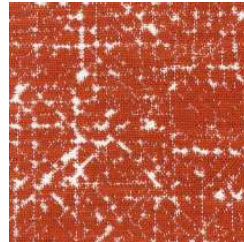
SUNNY 03



SUNNY 06



SUNNY 07



SUNNY 09