

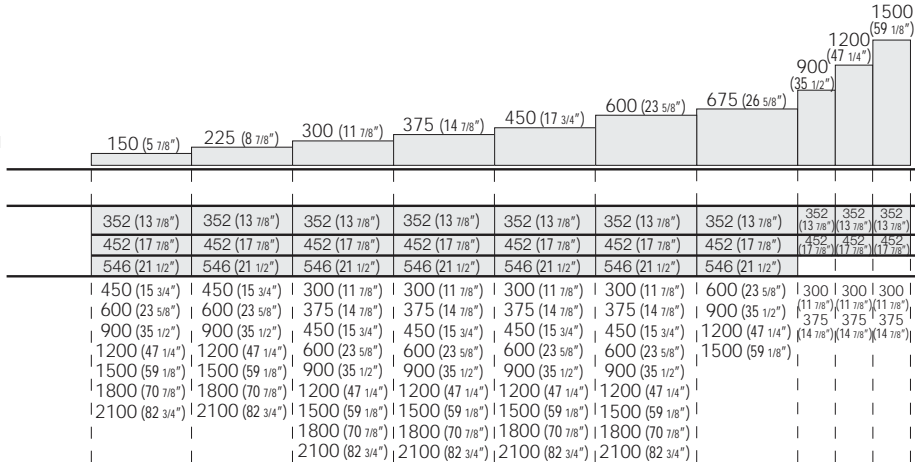
Storage units **Domino**

Features

MODULARITY

heights

Feet H 1 1/8"
Methacrylate/cylindrical/shaped/curved
foot H 3 1/4"-4 3/4"-5 7/8"-7 1/8"



PRODUCT DATA SHEET

STRUCTURE AND FRONTS in medium density *wood particle board panels thickness 7/8" with 45° shaped edges. internal side and edges faced with synthetic melamine matt lacquered or metal. External side with the same finish or coated with painted wood veneer. Internal shelves in transparent tempered glass thickness 1/4".

BACK PANELS medium density *wood particle board panels thickness 3/8" with synthetic melamine also matt lacquered or metal.

TURN DRAWER thickness 5/8" and BOTTOM thickness 3/8" in *wood particle board panels with melamine Juta-effect.

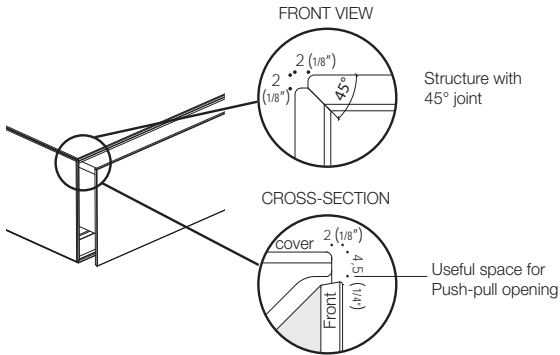
Black ABS FEET, diam. 1 7/8", height 1 1/8", 1/2" adjustable form the inside.

SOSPENDO BASE SUPPORT consisting of black metal frame with shaped laser-cut steel feet finished with epoxy or liquid painting.

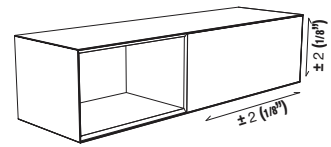
SHELVES in medium density *wood particle board panels thickness 1/2" with synthetic melamine matt lacquered or metal or coated with wood veneer. Shelves in fumé glass thickness 1/2".

*Wood and derivates components according to the following standards: EPA TSCA TITLE VI.

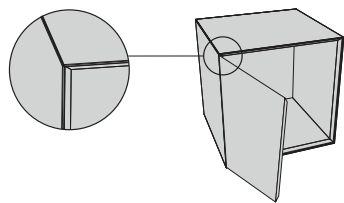
Structure detail



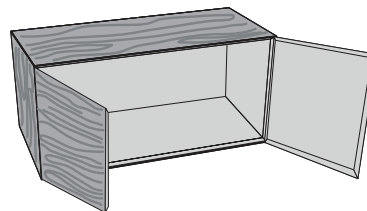
A special adjustable hinge is inset into the carcass and fronts to facilitate rotation of hinged or drop-down doors with 45° edges.



Finishes for Domino units



External/internal finish Matt lacquered
Metal lacquered




External finish Carbone, Grigio, Cenere, Argilla veneered oak
Internal finish Matt lacquered
Metal lacquered

Storage units **Domino**




STRUCTURAL FEATURES

STRUCTURES for hinged doors H 11 7/8"-14 7/8" PUSH-PULL OPENING

1 door	D	W
	13 7/8"	11 7/8"
	17 7/8"	
	21 1/2"	
	13 7/8"	14 7/8"
	17 7/8"	
	21 1/2"	

inner shelves upon request

STRUCTURES for hinged doors H 17 3/4"-23 5/8" PUSH-PULL OPENING

1 door	D	W	2 doors	D	W	2 doors with internal partition	D	W
	13 7/8"	11 7/8"		13 7/8"	35 1/2"		21 1/2"	47 1/4"
	17 7/8"	17 3/4"		17 7/8"			17 7/8"	47 1/4"
	21 1/2"	23 5/8"		21 1/2"			13 7/8"	47 1/4"

1 glass shelf

1 glass shelf

2 glass shelves

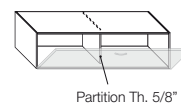
STRUCTURES for drop-down doors H 11 7/8"-14 7/8" PUSH-PULL OPENING

1 drop-down door

D	W
21 1/2"	23 5/8"-35 1/2"
17 7/8"	23 5/8"-35 1/2"
13 7/8"	23 5/8"-35 1/2"

inner shelves upon request

1 drop-down door with internal partition



D	W
21 1/2"	47 1/4"-59 1/8"
17 7/8"	47 1/4"-59 1/8"
13 7/8"	47 1/4"-59 1/8"

Press on the side opposite the hinges to operate the push-pull mechanism.

STRUCTURES for drawers H 5 7/8"-8 7/8"-11 7/8"-14 7/8" PUSH-PULL OPENING

1 drawer

D	W
21 1/2"	17 3/4"-23 5/8"-35 1/2"
17 7/8"	17 3/4"-23 5/8"-35 1/2"

Double drawer with internal partition

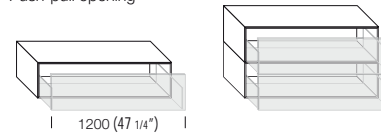
D	W
21 1/2"	59 1/8"-70 7/8"
17 7/8"	59 1/8"-70 7/8"

1 drawer W 47 1/4" with full turn drawer, top panel with anti-warping bar and mechanism for opening stabilization.

Cover max capacity 10 kg

It is possible to overlap aligned drawer units with one drawer with the same width.

Push-pull opening

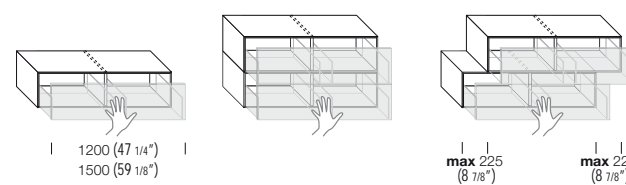


D	W
21 1/2"	47 1/4"
17 7/8"	47 1/4"

Full front with internal partition and double turn drawer UPON REQUEST.

Storage units with single or double turn drawer can be superimposed, also if not aligned

Press the centre of the front of this type of drawer to operate the push-pull mechanism.



D	W
21 1/2"	47 1/4"-59 1/8"
17 7/8"	47 1/4"-59 1/8"

RUNNERS FOR DRAWERS

Push-pull opening: High sliding full extraction metal runners with FULL EXTRACTION, end-of-run buffer with dynamic capacity of 30 kg. Integrated sliding synchronizer in drawer runners wider than 17 3/4". Anti-tilting pin, vertical and inclination adjustment of fronts incorporated in all system runners. Drawers width 47 1/4" and 59 1/8" with "MOVENTO" runners and side adjustment of fronts.

Opening with grip: High sliding full extraction metal runners with FULL EXTRACTION, end-of-run buffer with dynamic capacity of 30 kg. "Blumotion" soft-closing mechanism integrated in the runner for a silence and soft closing system.. Anti-tilting pin, vertical and inclination adjustment of fronts incorporated in all system runners. Additional stabilizer bar for drawers width 35 1/2" and "MOVENTO" runners with built-in stabilizer and also front side adjustment for drawers width 47 1/4" and 59 1/8".

DRAWER UNITS ARE DELIVERED WITH A NON-TILTING DEPTH ADJUSTMENT BRACKET TO BE FIXED TO THE WALL.

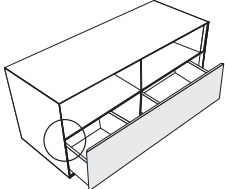
Storage units **Domino**

STRUCTURAL FEATURES

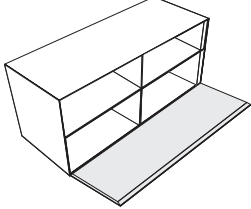
STRUCTURES FOR UNITS WITH UPPER OPEN COMPARTMENT

OPENING WITH UPPER OVERLAP

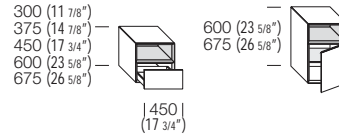
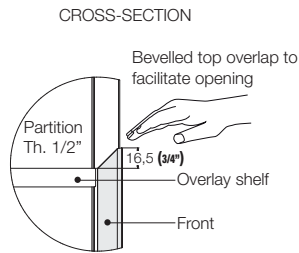
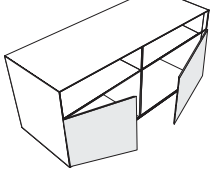
For drawers or deep drawers



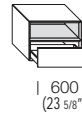
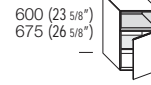
For drop-down door



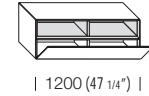
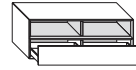
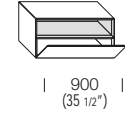
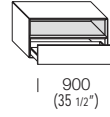
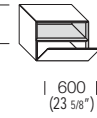
For hinged door



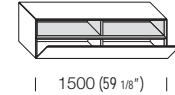
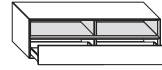
| 450 |
(17 3/4\"/>



375 (14 7/8\"/>



Full front with internal partition and double turn drawer

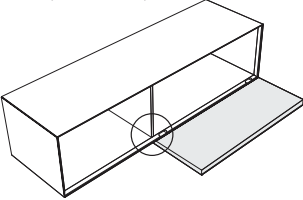


Full front with internal partition and double turn drawer

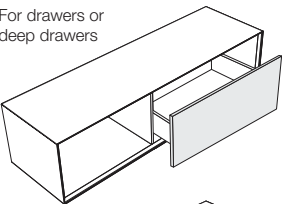
STRUCTURES FOR UNITS WITH SIDE OPEN COMPARTMENT

OPENING WITH SIDE OVERLAP

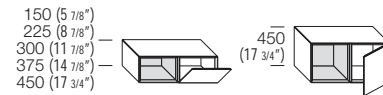
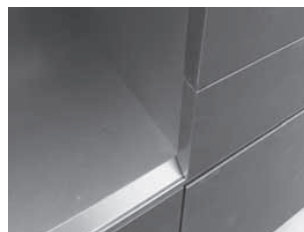
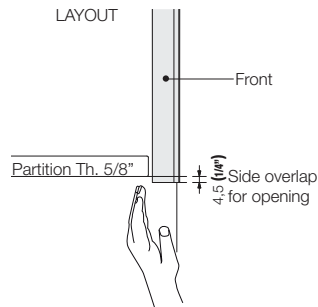
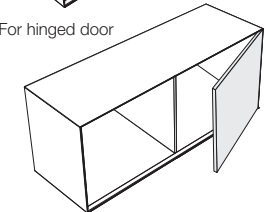
For drop-down/lift-up door



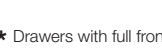
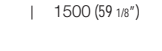
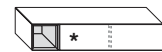
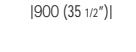
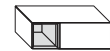
For drawers or deep drawers



For hinged door



| 900 (35 1/2\"/>

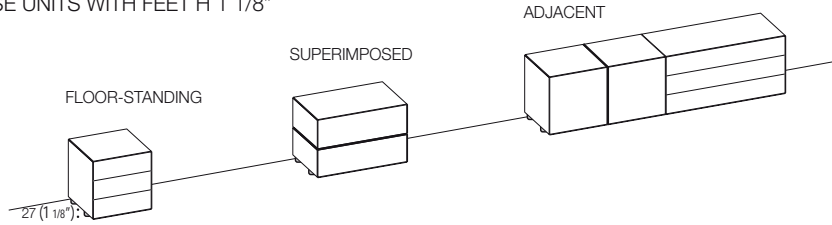


* Drawers with full front internal partition and double turn drawer

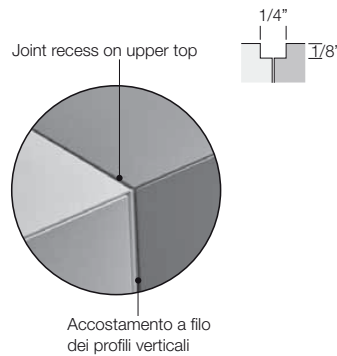
Storage units **Domino**

Technical features

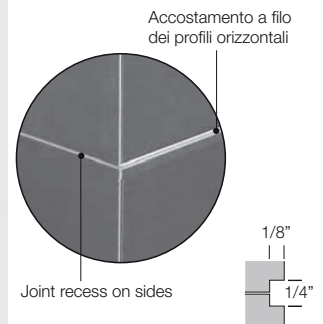
BASE UNITS WITH FEET H 1 1/8"



ADJACENT DOMINO STORAGE UNITS **Domino Più**



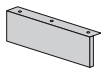
SUPERIMPOSED ALIGNED STORAGE UNITS **Domino IN**



IN.2

METHACRYLATE SPACER

Th. 1/2" for self-supporting compositions
D. 21 1/2" and 17 7/8"

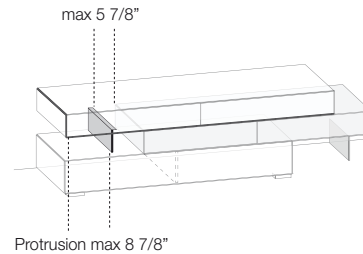
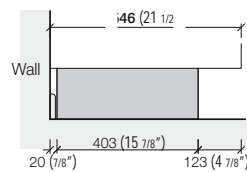
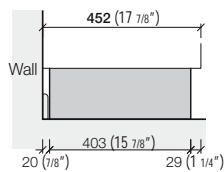


D CODE

15 7/8" CYDM400

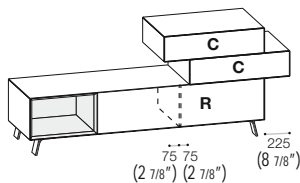
H 5 7/8"	H 8 7/8"	H 11 7/8"
H 6 7/8" floor-standing	H 9 7/8" floor-standing	H 12 7/8" floor-standing

41 44 59

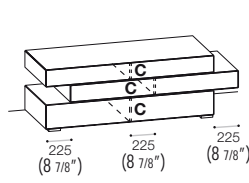


SUPERIMPOSED NOT ALIGNED STORAGE UNITS (FOR SELF-SUPPORTING COMPOSITIONS)

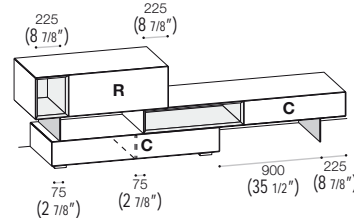
To ensure that the hardware works properly and to stop the structure from buckling, non-aligned side panels on superimposed units or internal partitions on those below or protruding on non-aligned or cantilever compositions must not exceed 8 7/8" (Examples 1 and 2). Methacrylate spacers can be positioned at a max distance of 8 7/8" from the side panels of the above units (Ex. 3.4) and their distance from the point at which they encounter the unit below should be no more than 35 1/2" (Ex. 3.4). Superimposed methacrylate spacers have to be positioned at a distance of 2 7/8" or 5 7/8" from side panels (Ex. 3) or from internal partitions (Ex. 4) of the above units. **Compositions not within these parameters are provided with superimposed units with wall mounting hardware.**



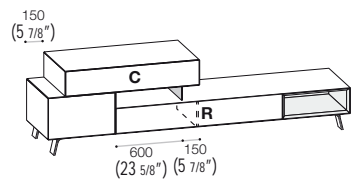
Ex. 1



Ex. 2



Ex. 3



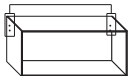
Ex. 4

Storage units **Domino**

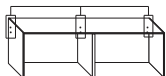
Technical features

OPEN WALL UNITS WITH DEPTH 13 7/8" - 17 7/8" OR WITH DOOR

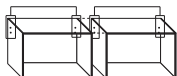
Open wall units W 11 7/8" - 14 7/8" - 17 3/4" - 23 5/8" - 35 1/2" - 47 1/4" with two brackets



Hanging units W 47 1/4" - 59 1/8" - 70 7/8" with three hangers



Adjacent wall units with four brackets



HANGER TYPE "A"



FRONT ADJUSTMENT



CATAS CERTIFICATE according to the standards : LGA - DIN

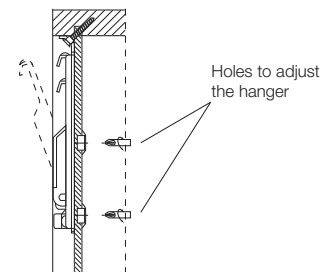
VERTICAL ADJUSTMENT



CAPACITY



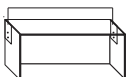
Hardware section with anti-detachment system.



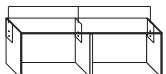
WALL UNITS WITH DEPTH 21 1/2" WITH DOOR, DRAWERS OR OPEN UNITS, WALL UNITS WITH DEPTH 17 7/8" WITH DRAWERS

These hanging units are equipped with hangers for wall mounting with an innovative automatic accidental unhooking system.

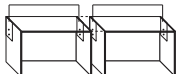
Wall units W 11 7/8" - 14 7/8" - 17 3/4" - 23 5/8" - 35 1/2" with two brackets



Hanging units W 47 1/4" - 59 1/8" - 70 7/8" with three hangers



Adjacent wall units with four brackets

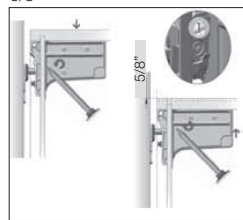


HANGER TYPE "B"

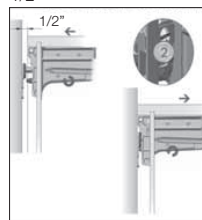
Shelf bracket attachment



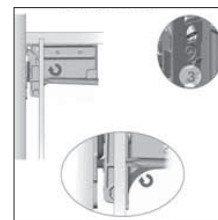
Vertical adjustment 5/8"



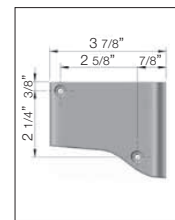
Horizontal adjustment 1/2"



Anti-detachment element



Hanger cover



FRONT ADJUSTMENT



CATAS CERTIFICATE according to the standards : TÜV - LGA

VERTICAL ADJUSTMENT



CAPACITY



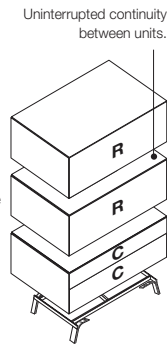
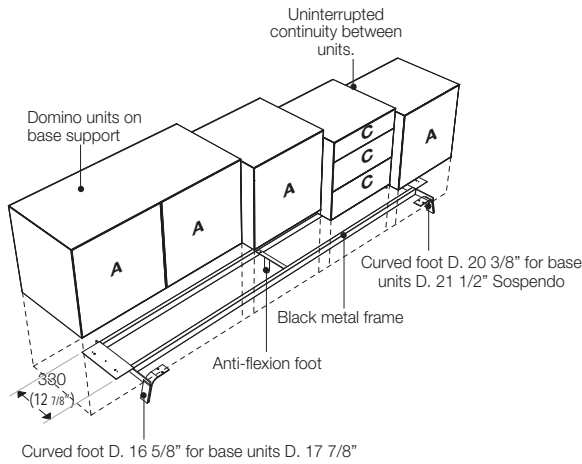
ATTENTION : the capacity is related to the hardware mounted in the furniture. The given plugs for the wall mounting may not be suitable in certain situations. The responsibility concerning the assembly of the furniture belongs to the buyer, who must evaluate the resistance of his/her wall. The stability and capacity of wall-mounted elements are guaranteed by the proper assembly and by following our instructions correctly.

The shelves inside the units are designed for the light loads typical of residential use (around 25 kg per square metre), distributed uniformly over the surface. For heavier or more concentrated loads, we recommend using single units with 11 7/8" - 14 7/8" - 17 3/4" - 23 5/8" width.

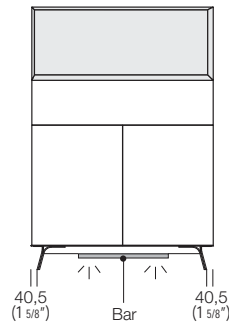
System Sospendo

UNITS ON SUSPENDO BASE SUPPORT

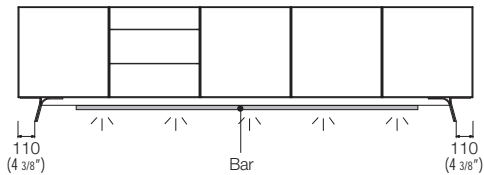
Domino units can be superimposed and placed next to a metal base support Sospendo with shaped feet H 5 7/8" (type V). Upon request feet type C, M, S can be used.



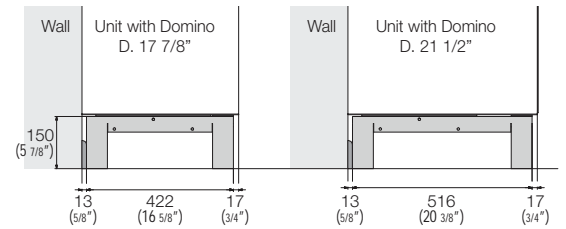
Front view of foot recess for storage units up to 47 1/4" wide



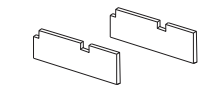
Front view of feet recess for storage units over 47 1/4" wide.



Domino feet section



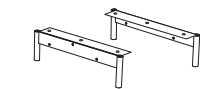
PAIR OF FEET D. 17 7/8"/21 1/2"



Methacrylate th. 1/2"

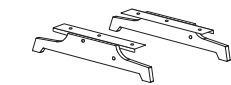
Foot code			
H 3 1/4"	H 4 3/4"	H 5 7/8"	H 7 1/8"

M1 **M2**



Cylindrical Ø 7/8"
Epoxy Metal
- Brown - Piombo
Painted metal
- Bronzo - Ottone - Rame

C2 **C3**



Shaped thickness 5/8"
Epoxy Metal
- Brown - Piombo
Painted metal
- Bronzo - Ottone - Rame

S1



Domino
Epoxy Metal
- Brown - Piombo
Painted metal
- Bronzo - Ottone - Rame

V2