

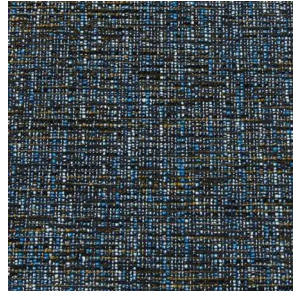
DELLA ROBBIA FABRICS:

SPRING 2026

GRADE 14 :



ALTON : Flurry
100% PL



FRASER : Azure
67% AC, 33% PL



FRASER : Gazette
67% AC, 33% PL



FRASER : Marin
67% AC, 33% PL



FRASER : Moonlight
67% AC, 33% PL



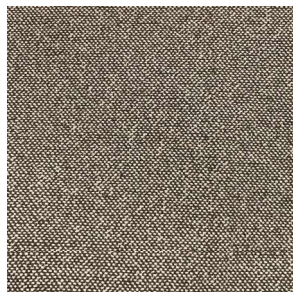
GUSTO : Glaze
62% PL, 27% RA, 11% PCP



MARQUEE : Nickel
100% PL



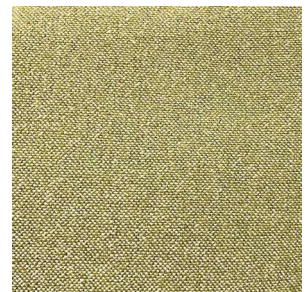
MARQUEE : Smoke
100% PL



STATESIDE : Chimney
63% PL, 37% AC



STATESIDE : Haze
63% PL, 37% AC



STATESIDE : Kiwi
63% PL, 37% AC



STATESIDE : Peacock
63% PL, 37% AC



TEMPO : Blaze
90% PL, 10% AC



TEMPO : Tides
90% PL, 10% AC



WINDSOR : Blizzard
52% PL, 31% PP, 17% AC

DELLA ROBBIA FABRICS:

SPRING 2026

GRADE 18 :



WINDSOR : Whirlwind
52% PL, 31% PP, 17% AC



ARMADA : Noble
51% PL, 49% VI



ARMADA : Sonnet
51% PL, 49% VI



ATLAS : Truffle
50% PL, 50% CO



ATLAS : Prussian
50% PL, 50% CO



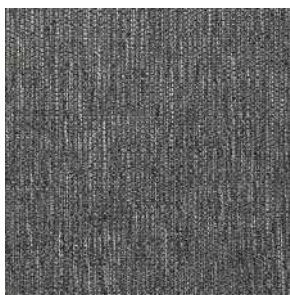
BARISTA : Broadway
49% PL, 32% VI, 19% LI



BARISTA : Bonsai
49% PL, 32% VI, 19% LI



CHAPMAN - Chestnut
100% PL



FINESSE : Trademark
59% PL, 41% AC



GEODE : Sun Glow
100% PL



HIRO : Viola
82% PL, 16% CO, 2% NYL



HIRO : Carbon
82% PL, 16% CO, 2% NYL



HIRO : Flat White
82% PL, 16% CO, 2% NYL



HIRO : Nori
82% PL, 16% CO, 2% NYL



HIRO : Affogato
82% PL, 16% CO, 2% NYL

DELLA ROBBIA FABRICS:

SPRING 2026



HIRO : Refresh
82% PL, 16% CO, 2% NYL



HIRO : Sunnyside
82% PL, 16% CO, 2% NYL



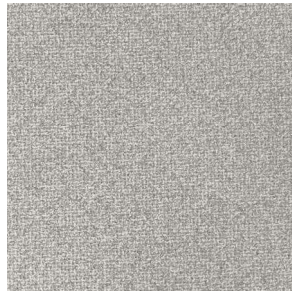
HOMER : Seaglass
100% PL



HOMER : Oatmeal
100% PL



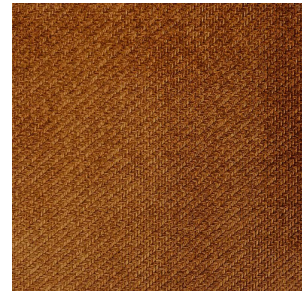
HOMER : Redrock
100% PL



LEPOR : Steel
100% PL



MERRELL : Mantis
100% Recycled PL



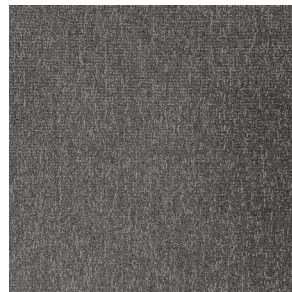
MERRELL : Brickwork
100% Recycled PL



MERRELL : Riverside
100% Recycled PL



RHODE : Rustic
55% PL, 45% AC



SAGA : Steelcase
100% PL



SAGA : Brick
100% PL



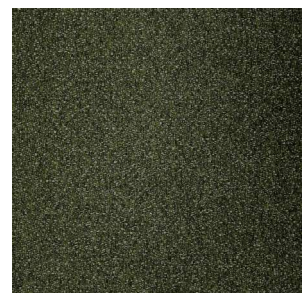
SAGA : Drift
100% PL



SAGA : Mustard
100% PL



SAGA : Quartz
100% PL

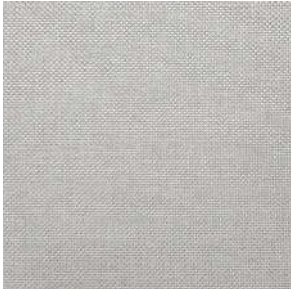


SAGA : Seaweed
100% PL

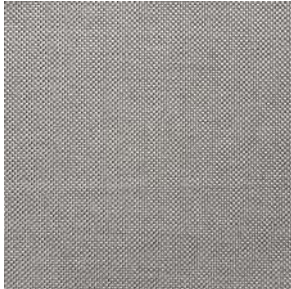
DELLA ROBBIA FABRICS:

SPRING 2026

GRADE 20 :



ARIA : Blanco
48% PP, 33% PL, 19% CO



ARIA : Sterling
48% PP, 33% PL, 19% CO



ARIA : Alchemist
48% PP, 33% PL, 19% CO



BALDWIN : Haven
60% PP, 35% PL, 5% CO



BALDWIN : Chromeo
60% PP, 35% PL, 5% CO



BALDWIN : Seaside
60% PP, 35% PL, 5% CO



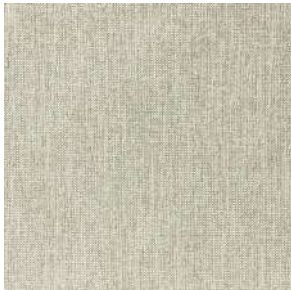
BALDWIN : Magma
60% PP, 35% PL, 5% CO



CALDWELL : Tidepool
38% PL, 36% CO, 26% RA



CAVALLO : Stonewash
83% PL, 17% CO



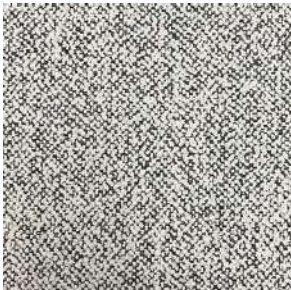
CAVALLO : Porcelain
83% PL, 17% CO



CITRA : Whiteout
70% PL, 30% recycled PL



CITRA : Quill
70% PL, 30% recycled PL



CITRA : Domino
70% PL, 30% recycled PL



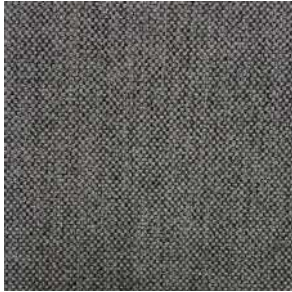
CITRA : Inkwell
70% PL, 30% recycled PL



CROFT : Truffle
14% PL, 86% recycled Olefin

DELLA ROBBIA FABRICS:

SPRING 2026



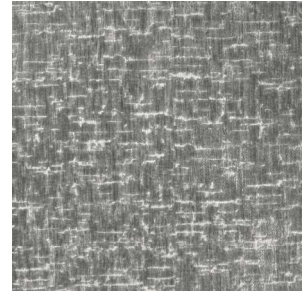
CROFT : Concrete
14% PL, 86% recycled Olefin



CROFT : Nightdive
14% PL, 86% recycled Olefin



DWELL : Starlight
100% PL



DWELL : Villa
100% PL



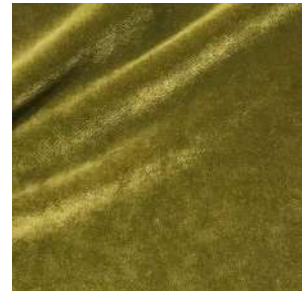
DWELL : Fortress
100% PL



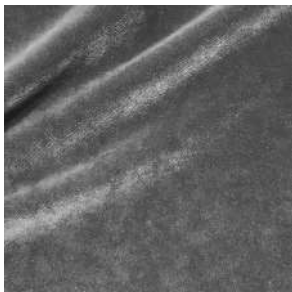
DWELL : Moonshine
100% PL



DWELL : Midnight
100% PL



ENCANTO : Lime
100% PL



ENCANTO : Steel
100% PL



ENCANTO : Teal
100% PL



ENCANTO : Indigo
100% PL



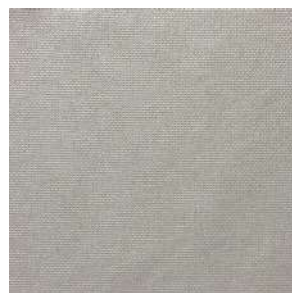
ENCANTO : Spice
100% PL



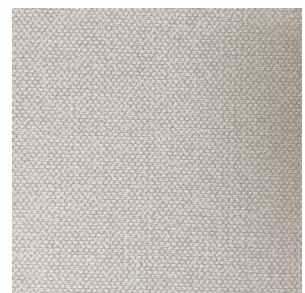
ENCANTO : Merlot
100% PL



EXPOSE : Tower
50% PL, 42% PP, 8% CO



EXPOSE : Catwalk
50% PL, 42% PP, 8% CO



FAIRMONT : Woven
100% PL

DELLA ROBBIA FABRICS:

SPRING 2026



FLUTTER : Fluff
100% PL



FLUTTER : Seagull
100% PL



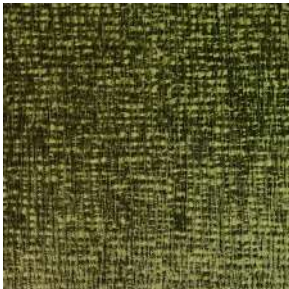
FLUTTER : Blush
100% PL



FLUTTER : Sunshine
100% PL



FLUTTER : Breeze
100% PLv



FLUTTER : Parrot
100% PL



FLUTTER : Hopscotch
100% PL



FURAI : Waterpark
80% PL, 20% CO



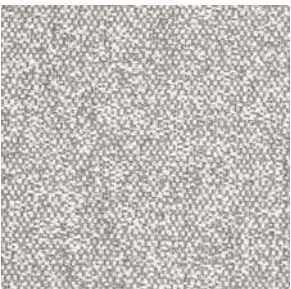
FURAI : Espresso
80% PL, 20% CO



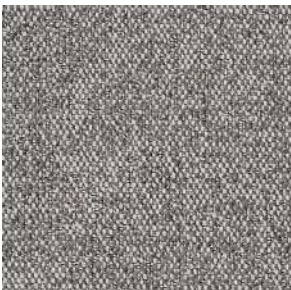
FURAI : Floresta
80% PL, 20% CO



GALA : Harmony
79% PL, 17% PP, 4% CO



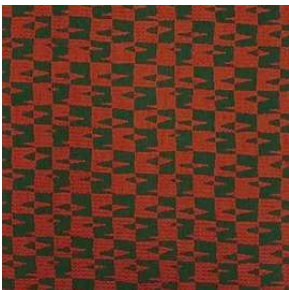
GALA : Invite
79% PL, 17% PP, 4% CO



GALA : Pavement
79% PL, 17% PP, 4% CO



HAKO : Sisal
36% PL, 20% UV PL, 18% CO, 19%
recycled CO, 7% Recycled PLv



HAKO : Checkmate
36% PL, 20% UV PL, 18% CO, 19%
recycled CO, 7% recycled PL



HAKO : Haven
36% PL, 20% UV PL, 18% CO, 19%
recycled CO, 7% recycled PL

DELLA ROBBIA FABRICS:

SPRING 2026



JUMPIFY : Windmill
78% PL, 16% recycled CO,
6% recycled PL



JUMPIFY : Blossom
78% PL, 16% recycled CO,
6% recycled PL



JUMPIFY : Jitters
78% PL, 16% recycled CO,
6% recycled PLv



LAGUNA : Canyon
51%5 PL, 37% OLE, 12% VI



LAGUNA : Beach
51%5 PL, 37% OLE, 12% VI



LAGUNA : Waves
51%5 PL, 37% OLE, 12% VI



LAGUNA : Afterdark
51%5 PL, 37% OLE, 12% VI



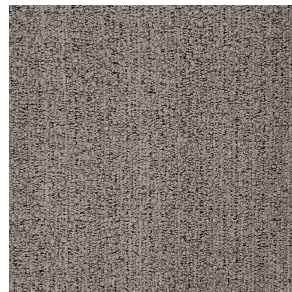
MARIPOSA : Air Stream
53% VI, 26% CO, 21% PL



MARIPOSA : Darling
53% VI, 26% CO, 21% PL



MAVIS : Milkshake
90% PL, 10% Acrylic



MAVIS : Mist
90% PL, 10% Acrylic



PERETTI : Feldspar
49% PP, 47% PL, 4% CO



PERETTI : Grayson
49% PP, 47% PL, 4% CO



PERETTI : Slate
49% PP, 47% PL, 4% CO



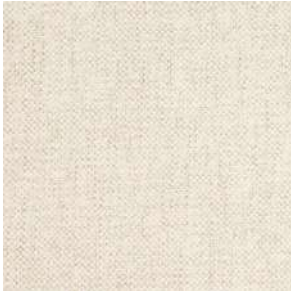
PERETTI : Pumice
49% PP, 47% PL, 4% CO



SELENA : Twilight
89% PL, 11% CO

DELLA ROBBIA FABRICS:

SPRING 2026



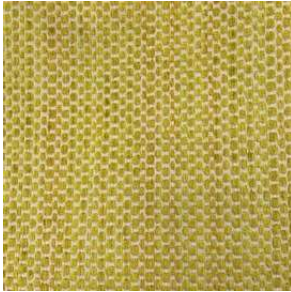
SELENA : Powder
89% PL, 11% CO



SOOKI : Snowbird
100% PL



SPECKLE : Brownstone
52% AC, 40% PL, 8% VI



SPECKLE : Sublime
52% AC, 40% PL, 8% VI



SPECKLE : Tapioca
52% AC, 40% PL, 8% VI



SPECKLE : Blue Print
52% AC, 40% PL, 8% VI



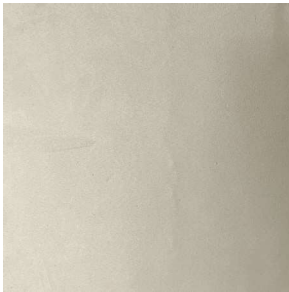
TOWNSEND : Moss
85% PL, 15% Glass Fbr



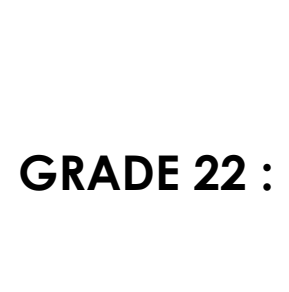
TOWNSEND : Slate
85% PL, 15% Glass Fbr



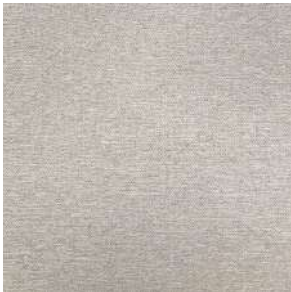
TOWNSEND : Taupe
85% PL, 15% Glass Fbr



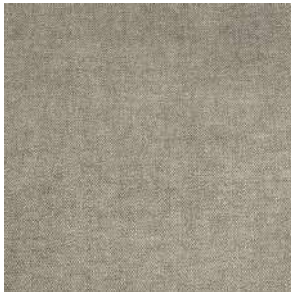
TOWNSEND : Cream
85% PL, 15% Glass Fbr



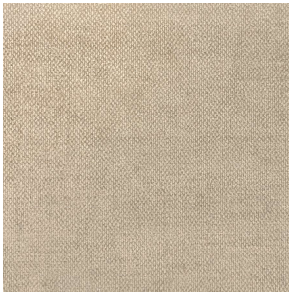
GRADE 22 :



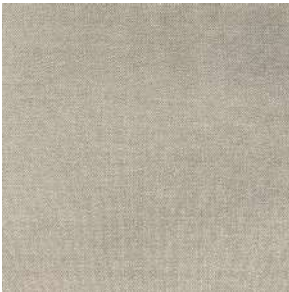
AGENCY : Artica
54% PL, 28% PL AC, 18% CO



DOLCE : Koala
91% PL, 9% CO



DOLCE : Sand
91% PL, 9% CO



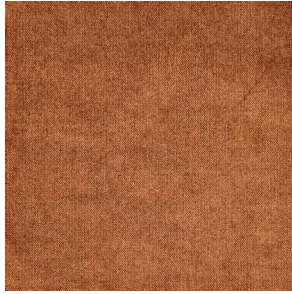
DOLCE : Frothe
91% PL, 9% CO



DOLCE : Greyhound
91% PL, 9% CO

DELLA ROBBIA FABRICS:

SPRING 2026



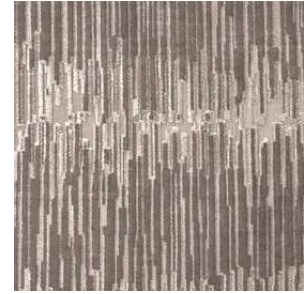
DOLCE : Spice
91% PL, 9% CO



DOLCE : Dessert
91% PL, 9% CO



DOLCE : Denim
91% PL, 9% CO



DUCHESS : Dazzled
60% PL, 14% CO-PL,
14% CO, 12% LI



ELMO : Nightsky
58% AC, 42% PL



ELMO : Lakeside
58% AC, 42% PL



ELMO : Grassland
58% AC, 42% PL



ELMO : Paprika
58% AC, 42% PL



ELMO : Smoke
58% AC, 42% PL



ELMO : Whisper
58% AC, 42% PL



HUDSON : Boardwalk
75% PL, 25% PP



HUDSON : Mist
75% PL, 25% PPv



HUDSON : Talc
75% PL, 25% PP



KELLOGG : Burnish
100% PL



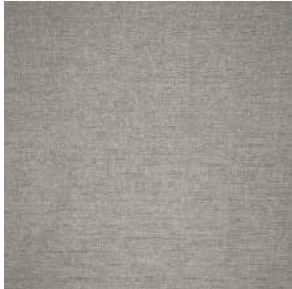
KELLOGG : Mica
100% PL



KELLOGG : Pomelo
100% PL

DELLA ROBBIA FABRICS:

SPRING 2026



KELLOGG : Heathered
100% PL



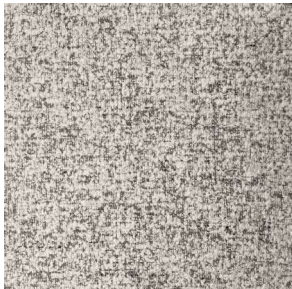
KELLOGG : Melange
100% PL



KELLOGG : Slate
100% PL



LOWELL : Haven
95% PL, 5% VI



LOWELL : Wind Swept
95% PL, 5% VI



LOWELL : Woolen
95% PL, 5% VI



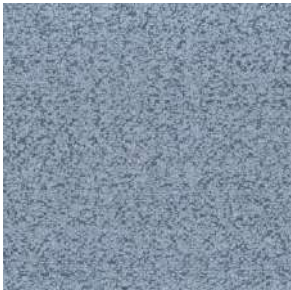
MESCAL : Seasalt
77% AC, 22% PL, 1% VI



MESCAL : Sidewalk
77% AC, 22% PL, 1% VI



MESCAL : Charcoal
77% AC, 22% PL, 1% VI



MESCAL : Lullaby
77% AC, 22% PL, 1% VI



MESCAL : Mascara
77% AC, 22% PL, 1% VI



MESCAL : Scarlet
77% AC, 22% PL, 1% VI



PRESCOT : Highway
42% PL, 42% PP, 16% CO



PRESCOT : Nimbus
42% PL, 42% PP, 16% CO



SAILING SHIP : Royal Blue
71% PL, 20% PP, 9% CO



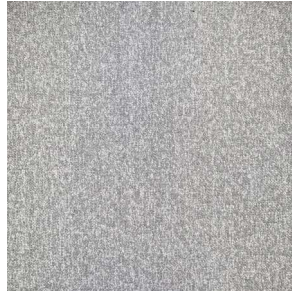
SERRANO : Sawdust
42% CO, 32% AC, 26% PL

DELLA ROBBIA FABRICS:

SPRING 2026



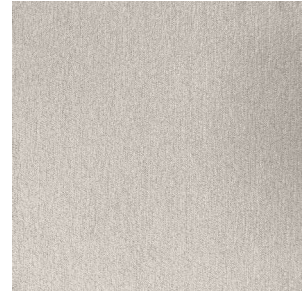
SAILING SHIP : Gunmetal
71% PL, 20% PP, 9% CO



SAILING SHIP : Rope
71% PL, 20% PP, 9% CO



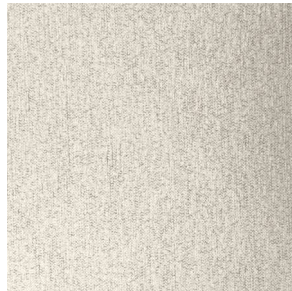
SERRANO : Stonework
42% CO, 32% AC, 26% PL



SONORA : Fleece
44% Recy PL, 43% PL
7% Recy CO, 6% other



SONORA : Mudstone
44% Recy PL, 43% PL
7% Recy CO, 6% other



SONORA : Snowfall
44% Recy PL, 43% PL
7% Recy CO, 6% other

GRADE 24 :



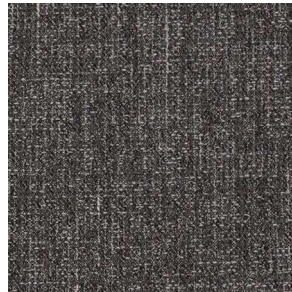
BRAINSTORM : Current
64% CO, 16% PL, 10% RA,
10% NYL



BRAINSTORM : Kindle
64% CO, 16% PL, 10% RA,
10% NYL



BRIONY : Deep Sea
51% PL, 30% CO,
19% PL AC



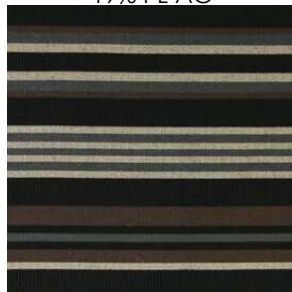
BRIONY : Deep Gravel
51% PL, 30% CO,
19% PL AC



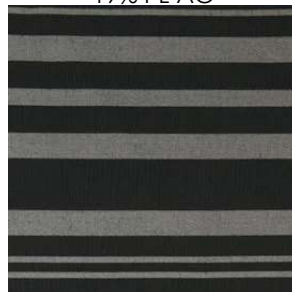
DIVINE : Dunes
90% PL, 10% VI



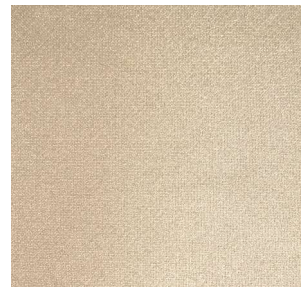
FINLEY : Splendor
50% VI, 25% LI, 18% CO
7% PL



HEADLINE : Dateline
88% VI, 12% Polyamide



HEADLINE : Niteline
88% VI, 12% Polyamide



HERMOSA : Sand Dollar
48% RA, 24% CO, 22% PL,
6% AC

DELLA ROBBIA FABRICS:

SPRING 2026



LANDMARK : Granite
84% PL, 16% AC



LANDMARK : Milestone
84% PL, 16% AC



LANDMARK : Mineral
84% PL, 16% AC



LUNETTA : Heather
45% PP, 24% PL, 5% Recy CO,
5% Recy PL, 4% Other



LUNETTA : Polar Bear
45% PP, 24% PL, 5% Recy CO,
5% Recy PL, 4% Other



LUNETTA : Whiskers
45% PP, 24% PL, 5% Recy CO,
5% Recy PL, 4% Other



MARCH : Stucco
24% CO, 1% LI, 34% PL AC,
21% PL, 20% VI



MARCH : Madness
24% CO, 1% LI, 34% PL AC,
21% PL, 20% VI



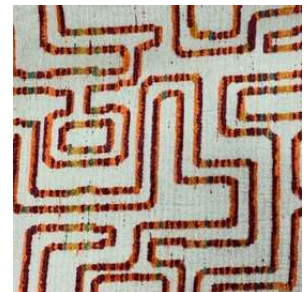
MARCH : Montero
24% CO, 1% LI, 34% PL AC,
21% PL, 20% VI



MARCH : Poolside
24% CO, 1% LI, 34% PL AC,
21% PL, 20% VI



RADIANCE :
Moonlight
88%PL, 12% PL AC



STARGATE : Wildchild
67% AC, 29%PL, 4% VI



STARGATE : Past Time
67% AC, 29%PL, 4% VI



STARGATE : Cosmos
67% AC, 29%PL, 4% VI



TOMO : Wine
97% PL, 3% LI



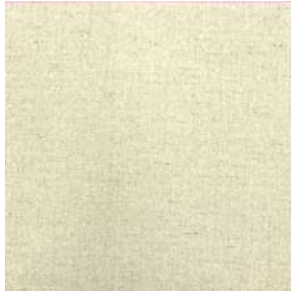
TOMO : Prussian
97% PL, 3% LI

DELLA ROBBIA FABRICS:

SPRING 2026



TOMO : Latte
97% PL, 3% LI



TOMO : Jasmine
97% PL, 3% LI



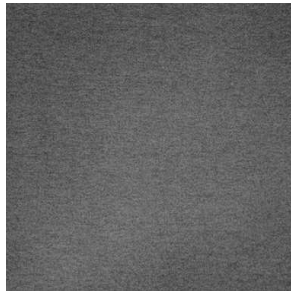
TOMO : Shadow
97% PL, 3% LI



VARSITY : Veranda
100% WL



VARSITY : Umber
100% WL



VARSITY : Cavern
100% WL

GRADE 26 :



GALAXY : Eclipse
48% PL, 42% VI, 10% CO

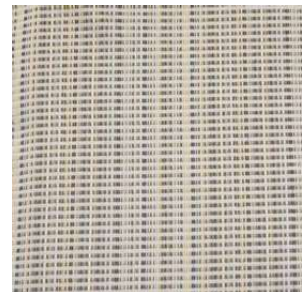


GALAXY : Sol
48% PL, 42% VI, 10% CO



HIPPIE : Desiree
90% PL, 10% AC

GRADE 28 :



ARCO : Tranquillo
100% PL



PROMENADE : Argento
69% VI, 16% LI, 15% CO